

11-22-2016

# 000534, US Land Patent, T27S, R13E, Robert Watt, May 1, 1869, and BLM Land Patent Detail Sheet

Follow this and additional works at: [http://digitalcommons.csumb.edu/hornbeck\\_cgb\\_9](http://digitalcommons.csumb.edu/hornbeck_cgb_9)



Part of the [Education Commons](#), and the [Law Commons](#)

---

## Recommended Citation

"000534, US Land Patent, T27S, R13E, Robert Watt, May 1, 1869, and BLM Land Patent Detail Sheet" (2016). *Pre-1872 Land Patents in the Basins*. Book 243.

[http://digitalcommons.csumb.edu/hornbeck\\_cgb\\_9/243](http://digitalcommons.csumb.edu/hornbeck_cgb_9/243)

This Patent is brought to you for free and open access by the Salinas River and Carmel River Groundwater Basins at Digital Commons @ CSUMB. It has been accepted for inclusion in Pre-1872 Land Patents in the Basins by an authorized administrator of Digital Commons @ CSUMB. For more information, please contact [digitalcommons@csumb.edu](mailto:digitalcommons@csumb.edu).

*Exhibit 43*



# The United States of America,

To all to whom these presents shall come, Greeting:

Whereas, In pursuance of the Act of Congress, approved July 2, 1862, entitled "An Act Donating Public Lands to the several States and Territories which may provide Colleges for the benefit of Agriculture and the Mechanic Arts," there has been deposited in the GENERAL LAND OFFICE Scrip No. 534, for one quarter section of Land, in favor of the State of Tennessee, duly assigned by the proper authority of the said State to Robert Watt

with evidence that the same has been located upon the North West quarter of section twenty one in Township twenty seven, South, of Range thirteen, <sup>Mount Diablo Meridian</sup> East in the District of Lands subject to sale at San Francisco, <sup>California</sup> containing one hundred and sixty acres

according to the Official Plat of the Survey of the said Land returned to the General Land Office by the Surveyor General:

Now Know Ye, That there is therefore granted by the UNITED STATES unto the said Robert Watt, as Assignee, as aforesaid, and his heirs the tract of Land above described: To have and to hold the said tract of Land, with the appurtenances thereof, unto the said Robert Watt, as Assignee, as aforesaid, and his heirs and assigns forever.

In Testimony Whereof, I, Ulysses S. Grant, President of the United States of America, have caused these Letters to be made Patent, and the SEAL OF THE GENERAL LAND OFFICE to be hereunto affixed.

Given under my hand, at the City of Washington, the first day of May, in the year of our Lord one thousand eight hundred and Sixty nine, and of the Independence of the United States the Ninth third



By the President: U. S. Grant

By J. N. Gurrutt, Sec'y.

J. N. Gurrutt Recorder of the General Land Office, acting ad interim.

U.S. DEPARTMENT OF THE INTERIOR *PRIVATE CLAIMS*  
**BUREAU OF LAND MANAGEMENT** General Land Office Records



[Home](#) | 
 [Search Documents](#) | 
 [Reference Center](#) | 
 [Support](#) | 
 [Shopping Cart](#)

[Search Documents](#) | 
 [Results List](#) | 
 [Patent Details](#)

Accession Nr: [AGS-0297-031](#) | 
 Document Type: [Agricultural Scrip Patent](#) | 
 State: [California](#) | 
 Issue Date: [5/1/1869](#) | 
 Cancelled: [No](#)

[Patent Details](#) | 
 [Patent Image](#) | 
 [Related Documents](#)

[Printer Friendly](#)

**Names On Document**

<a href="#">WATT, ROBERT</a>
<b>Military Rank:</b> ---

**Miscellaneous Information**

<b>Land Office:</b>	<a href="#">San Francisco</a>
<b>US Reservations:</b>	<a href="#">No</a>
<b>Mineral Reservations:</b>	<a href="#">No</a>
<b>Tribe:</b>	<a href="#">---</a>
<b>Militia:</b>	<a href="#">---</a>
<b>State In Favor Of:</b>	<a href="#">TN</a>
<b>Authority:</b>	<a href="#">July 2, 1862: State Grant-Agri College (12 Stat. 503)</a>
<b>General Remarks:</b>	<a href="#">---</a>

**Document Numbers**

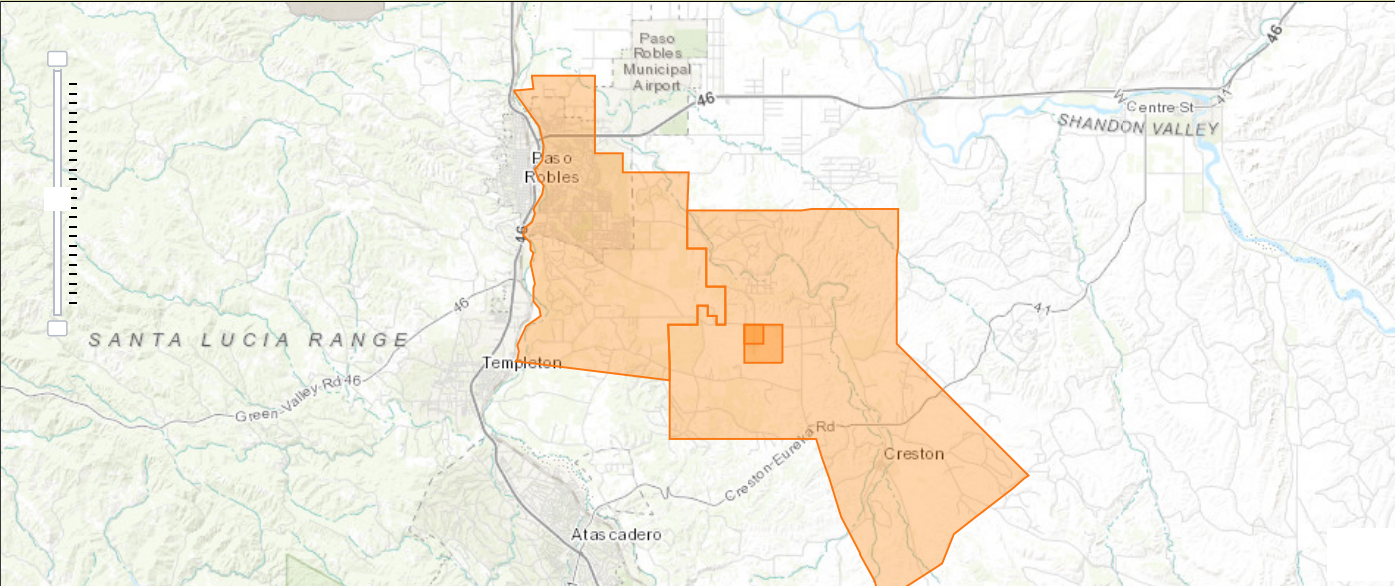
<b>Document Nr:</b>	<a href="#">534</a>
<b>Misc. Doc. Nr:</b>	<a href="#">---</a>
<b>BLM Serial Nr:</b>	<a href="#">---</a>
<b>Indian Allot. Nr:</b>	<a href="#">---</a>
<b>Coal Entry. Nr:</b>	<a href="#">---</a>

**Survey Information**

<b>Total Acres:</b>	<a href="#">160.00</a>
<b>Survey Date:</b>	<a href="#">---</a>
<b>Geographic Name:</b>	<a href="#">---</a>
<b>Metes/Bounds:</b>	<a href="#">No</a>

**Land Descriptions**

Map	State	Meridian	Twp - Rng	Aliquots	Section	Survey #	County
<input checked="" type="checkbox"/>	<a href="#">CA</a>	<a href="#">Mount Diablo</a>	<a href="#">027S - 013E</a>	<a href="#">NW¼</a>	<a href="#">21</a>		<a href="#">San Luis Obispo</a>



[USA.GOV](#) | 
 [No Fear Act](#) | 
 [DOI](#) | 
 [Disclaimer](#) | 
 [About BLM](#) | 
 [Notices](#) | 
 [Get Adobe Reader®](#)  
[Privacy Policy](#) | 
 [FOIA](#) | 
 [Kids Policy](#) | 
 [Contact Us](#) | 
 [Accessibility](#) | 
 [Site Map](#) | 
 [Home](#)