

1-8-2018

San Emigdio, Diseños 556, GLO No. 343, Kern County, and associated historical documents.

Follow this and additional works at: https://digitalcommons.csumb.edu/hornbeck_usa_4_a_kc



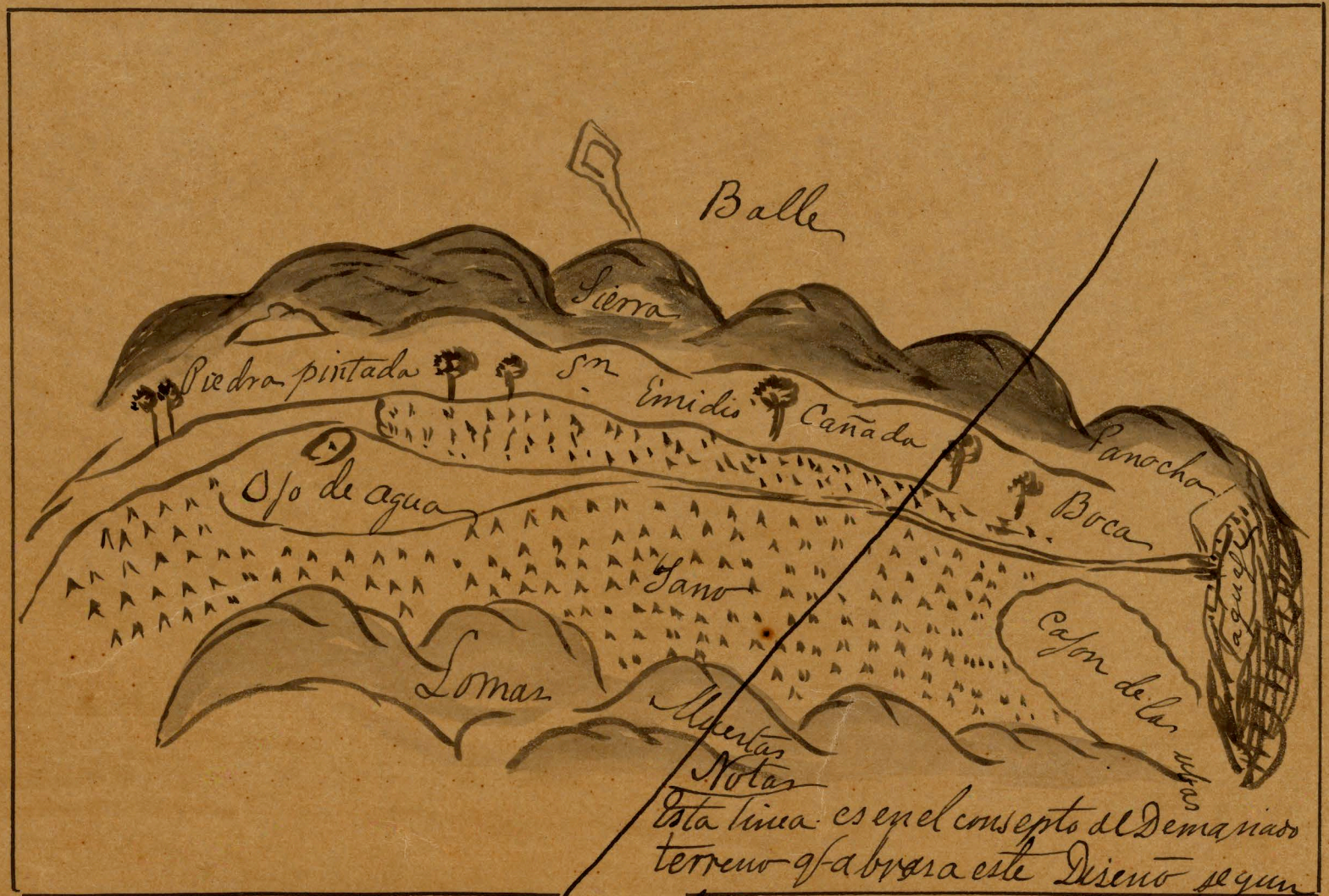
Part of the [Arts and Humanities Commons](#), [Education Commons](#), [Law Commons](#), [Life Sciences Commons](#), and the [Social and Behavioral Sciences Commons](#)

Recommended Citation

"San Emigdio, Diseños 556, GLO No. 343, Kern County, and associated historical documents." (2018). *Kern County*. 4.

https://digitalcommons.csumb.edu/hornbeck_usa_4_a_kc/4

This Map is brought to you for free and open access by the Private Land Claims by County at Digital Commons @ CSUMB. It has been accepted for inclusion in Kern County by an authorized administrator of Digital Commons @ CSUMB. For more information, please contact digitalcommons@csumb.edu.



Esta linea es en el concepto del demarcado terreno q' abraza este Diseño segun el conocimiento q' de el tiene de

1-330
 Juan de Alvarado y
 Juan Emilian
 Jefe de Oficina de
 Agosto 3.º 1855
 Cmo. Fructos
 Espectante