

12-15-2016

1996 San Luis Obispo County Map - Township and Range

Follow this and additional works at: https://digitalcommons.csumb.edu/hornbeck_cgb_4



Part of the [Business Commons](#), [Education Commons](#), [Law Commons](#), and the [Social and Behavioral Sciences Commons](#)

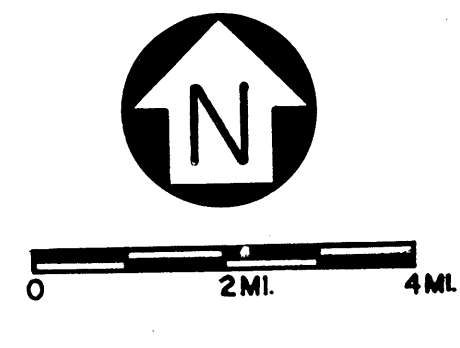
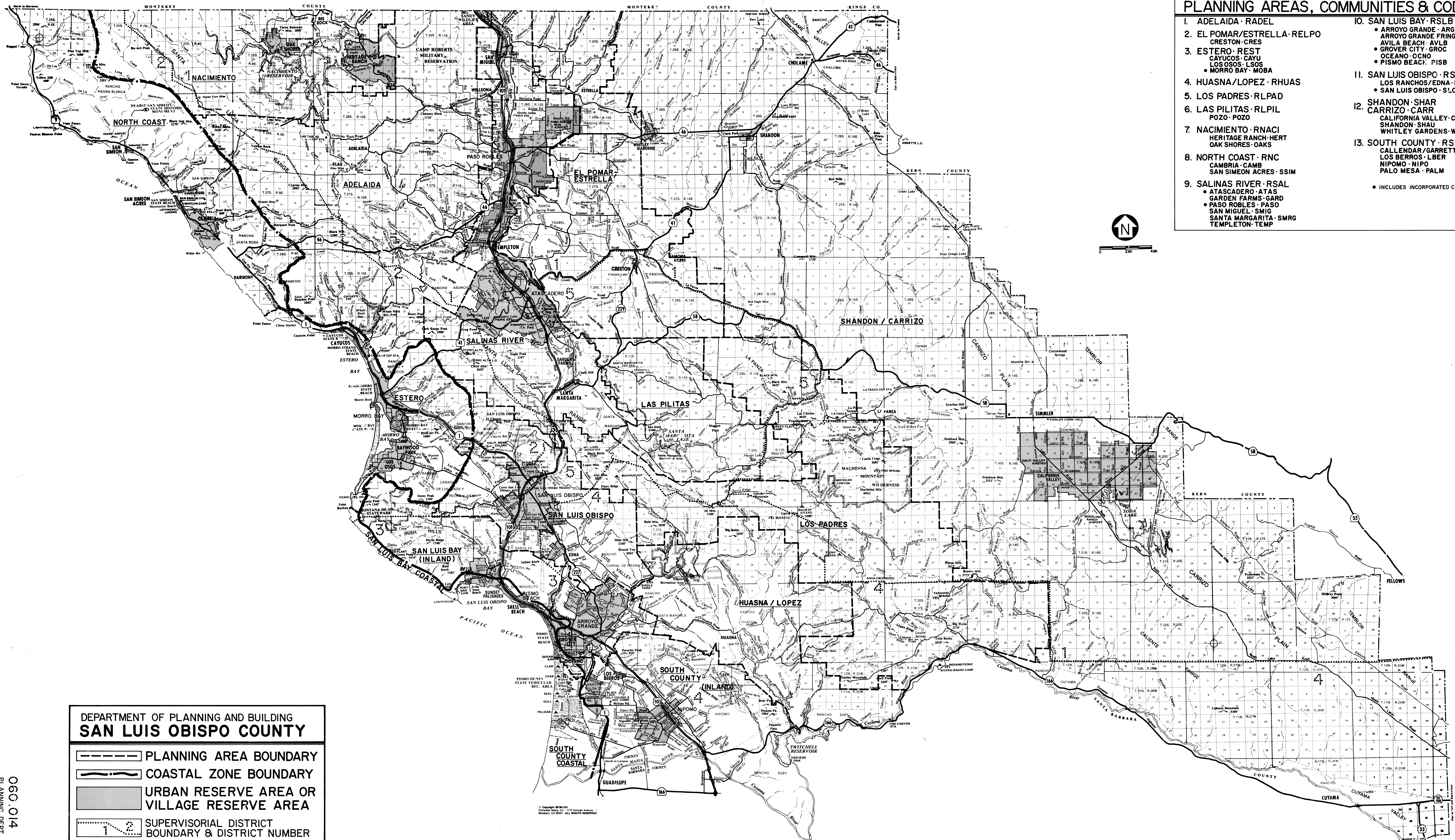
Recommended Citation

"1996 San Luis Obispo County Map - Township and Range" (2016). *Groundwater Basin Maps*. 12.
https://digitalcommons.csumb.edu/hornbeck_cgb_4/12

This Map is brought to you for free and open access by the Salinas River and Carmel River Groundwater Basins at Digital Commons @ CSUMB. It has been accepted for inclusion in Groundwater Basin Maps by an authorized administrator of Digital Commons @ CSUMB. For more information, please contact digitalcommons@csumb.edu.

PLANNING AREAS, COMMUNITIES & CODES

- 1. ADELAIDA · RADEL
 - 2. EL POMAR/ESTRELLA · RELPO
CRESTON · CRES
 - 3. ESTERO · REST
CAYUCOS · CAYU
LOS OSOS · LSOB
MORRO BAY · MOBA
 - 4. HUASNA/LOPEZ · RHUAS
 - 5. LOS PADRES · RLPAD
 - 6. LAS PILITAS · RLPIL
POZO · POZO
 - 7. NACIMIENTO · RNACI
HERITAGE RANCH · HERT
OAK SHORES · OAKS
 - 8. NORTH COAST · RNC
CAMBRIA · CAMB
SAN SIMEON ACRES · SSIM
 - 9. SALINAS RIVER · RSAL
ATASCADERO · ATAS
GARDEN FARMS · GARD
PASO ROBLES · PASO
SAN MIGUEL · SMIG
SANTA MARGARITA · SMRG
TEMPLETON · TEMP
 - 10. SAN LUIS BAY · RSLB
ARROYO GRANDE · ARGR
ARROYO GRANDE FRINGE · AGFR
AVILA BEACH · AVLB
GROVER CITY · GROC
OCEANO · OCNO
PISMO BEACH · PISB
 - 11. SAN LUIS OBISPO · RSL0
LOS RANCHOS/EDNA · EDNA
SAN LUIS OBISPO · SLOC
 - 12. SHANDON · SHAR
CARRIZO · CARR
CALIFORNIA VALLEY · CAVA
SHANDON · SHAU
WHITLEY GARDENS · WHIT
 - 13. SOUTH COUNTY · RSC
CALLENDAR/GARRETT · CALG
LOS BERROS · LBER
NIPOMO · NIPO
PALO MESA · PALM
- INCLUDES INCORPORATED CITY AREA



DEPARTMENT OF PLANNING AND BUILDING
SAN LUIS OBISPO COUNTY

- PLANNING AREA BOUNDARY
- COASTAL ZONE BOUNDARY
- URBAN RESERVE AREA OR VILLAGE RESERVE AREA
- SUPERVISORIAL DISTRICT BOUNDARY & DISTRICT NUMBER

THIS MAP IS FOR REFERENCE PURPOSE ONLY PLEASE SEE OFFICIAL MAPS OR RECORDS FOR PRECISE BOUNDARY LOCATIONS.
REVISED: 9-16-96