

Summer 8-18-2016

## 2010 Monterey County Water Resources Agency Groundwater Extraction Summary Report

Follow this and additional works at: [https://digitalcommons.csumb.edu/hornbeck\\_cgb\\_6\\_a](https://digitalcommons.csumb.edu/hornbeck_cgb_6_a)



Part of the [Education Commons](#), [Law Commons](#), [Life Sciences Commons](#), and the [Social and Behavioral Sciences Commons](#)

---

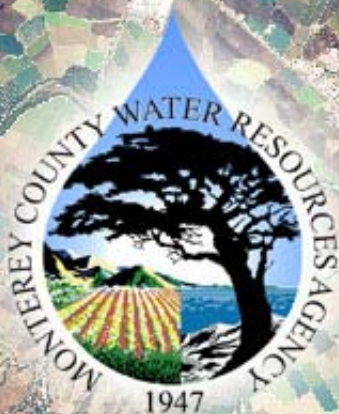
### Recommended Citation

"2010 Monterey County Water Resources Agency Groundwater Extraction Summary Report" (2016).  
*Monterey County Water Resources Agency Water Reports*. 5.  
[https://digitalcommons.csumb.edu/hornbeck\\_cgb\\_6\\_a/5](https://digitalcommons.csumb.edu/hornbeck_cgb_6_a/5)

This Report is brought to you for free and open access by the Monterey County Water Resources Agency at Digital Commons @ CSUMB. It has been accepted for inclusion in Monterey County Water Resources Agency Water Reports by an authorized administrator of Digital Commons @ CSUMB. For more information, please contact [digitalcommons@csumb.edu](mailto:digitalcommons@csumb.edu).



# 2010 Ground Water Summary Report



Monterey County Water Resources Agency

June 2011





---

## Table of Contents

---

<b>Overview of the Ground Water Reporting Program.....</b>	<b>1</b>
History of the Ground Water Reporting Program.....	1
2010 Ground Water Summary Report .....	1
Reporting Methods .....	1
Disclaimer.....	1
Reporting Format .....	1
<b>Ground Water Extraction Data Summary.....</b>	<b>2-3</b>
Summary of Methods Used for Extraction Reporting.....	3
Total Extraction Data by Hydrologic Subarea and Type of Use.....	3
Urban Extraction Data by City or Area .....	3
<b>Agricultural Water Conservation Plans.....</b>	<b>4-6</b>
<b>Water and Land Use Forms .....</b>	<b>6-9</b>
Agricultural Water Pumped .....	6
<b>Urban Water Conservation Plans.....</b>	<b>10</b>

---

## List of Tables

---

Table 1. Total extraction data by reporting method.....	3
Table 2. Total extraction data by hydrologic subarea and type of use .....	3
Table 3. Urban extraction data by city or area .....	3
Table 4. 1993 – net acre distribution of irrigation methods by crop type (based on 94% companies reported).....	4
Table 5. 2009 – net acre distribution of irrigation methods by crop type (based on 96% companies reported).....	4
Table 6. 2010 – net acre distribution of irrigation methods by crop type (based on 95% companies reported).....	4
Table 7. 2011 – net acre distribution of irrigation methods by crop type (based on 94% companies reported).....	4
Table 8. Agricultural Best Management Practices reported to be adopted from 2004 through 2011 .....	6
Table 9. Urban Best Management Practices reported to be adopted from 2007 through 2011 .....	10

---

## List of Figures

---

Figure 1. Agency Zones and hydrologic subareas of the Salinas Valley Ground Water Basin .....	2
Figure 2. Percentage distribution by volume of methods used for extraction reporting .....	3
Figure 3. Percentage of total extractions by hydrologic subarea .....	3
Figure 4. Distribution of urban extraction by city or area.....	3
Figure 5. Types of irrigation methods used in the Salinas Valley based on companies reported .....	5
Figure 6. Top ten Best Management Practices forecasted for 2011 based on reported net acres .....	6
Figure 7. 2010 reported acre-feet by crop type & hydrologic subarea.....	7
Figure 8. 2010 reported net acres by crop type & hydrologic subarea .....	8
Figure 9. 2010 reported acre-feet/acre by crop type & hydrologic subarea .....	9

---

# Overview of the Ground Water Reporting Program

---

## History of the Ground Water Reporting Program

In February 1993, the Monterey County Board of Supervisors adopted Ordinance No. 3663 that required water suppliers within Zones 2, 2A, and 2B to report water-use information for ground water extraction facilities (wells) and service connections to the Monterey County Water Resources Agency (Agency). Monterey County Ordinance No. 3717, which replaced Ordinance No. 3663 and was adopted in October 1993, modified certain other requirements in the previous ordinance while keeping the ground water extraction reporting requirements in place for wells with a discharge pipe having an inside diameter of at least three inches.

The Agency has collected ground water extraction data from well operators, for the period beginning November 1 and ending October 31, starting with the 1992-1993 reporting year. Information received from the 300-plus well operators in the above-referenced zones of the Salinas Valley is compiled by the Ground Water Extraction Management System (GEMS) portion of the Water Resources Agency Information Management System (WRAIMS), a relational database maintained by the Agency. The intent of the ground water reporting program is to provide documentation of the reported amount of ground water that is extracted from Zones 2, 2A, and 2B of the Salinas Valley Ground Water Basin each year.

Since 1991, the Agency has required the annual submittal of Agricultural Water Conservation Plans (Ordinance 3851), which outline the best management practices that are adopted each year by growers in the Salinas Valley. In 1996, an ordinance was passed that requires the filing of Urban Water Conservation Plans (Ordinance 3886). Developed as the urban counterpart of the agricultural water conservation plans, this program provides an overview of the best management practices being implemented by urban water purveyors as conservation measures.

## 2010 Ground Water Summary Report

The purpose of this report is to summarize the data submitted to the Agency by well operators in February 2011 from the following annual reports:

- Ground Water Extraction Reports (agricultural and urban)
- Water Conservation Plans (agricultural and urban)
- Water and Land Use Forms (agricultural)

The agricultural data from the ground water extraction program covers the reporting year of November 1, 2009, through October 31, 2010; the urban data covers calendar year 2010. The agricultural and urban water conservation plans adopted for 2011 are also summarized. This report is intended to present a synopsis of current water extraction within the Salinas Valley, including agricultural and urban water conservation improvements that are being implemented to reduce the total amount of water pumped. It is not the purpose of this report to thoroughly analyze the factors that contribute to increases or decreases in pumping.

## Reporting Methods

The Ground Water Conservation and Extraction Program provides well operators with a choice of three different reporting methods for each of their wells: Water Flowmeter, Electrical Meter, or Hour Meter (timer). The summary of ground water extractions presented in this report is compiled from data generated by all three reporting methods. Ordinance 3717 requires annual pump efficiency tests and/or meter calibration of each well to ensure the accuracy of the data reported.

## Disclaimer

While the Agency has made every effort to ensure the accuracy of the data presented in this report, it should be noted that the data is submitted by individual reporting parties and is not verified by Agency staff. In addition, since so many factors can affect the extraction calculations, it is understood that no reporting method is 100 percent accurate. The Agency maintains strict quality assurance in the compilation, standardization, and entry of the data received. The Agency received Ground Water Extraction Reports from ninety-seven percent (97%) of the 1846 wells in the Salinas Valley for the 2010 reporting year. Agricultural and Urban Water Conservation Plan submittals for 2011 were ninety-four percent (94%) and ninety-five percent (95%), respectively.

## Reporting Format

Ground water extraction data is presented in this report by measurement in acre-feet. One acre-foot is equal to 325,851 gallons.

# Ground Water Extraction Data Summary

The Salinas Valley Ground Water Basin is divided into four major hydrologic subareas whose boundaries are derived from discernible changes in the hydrogeologic conditions of the underground aquifers. Figure 1 (below) illustrates the Agency-designated Zones of the Salinas Valley in relation to the hydrologic subareas.

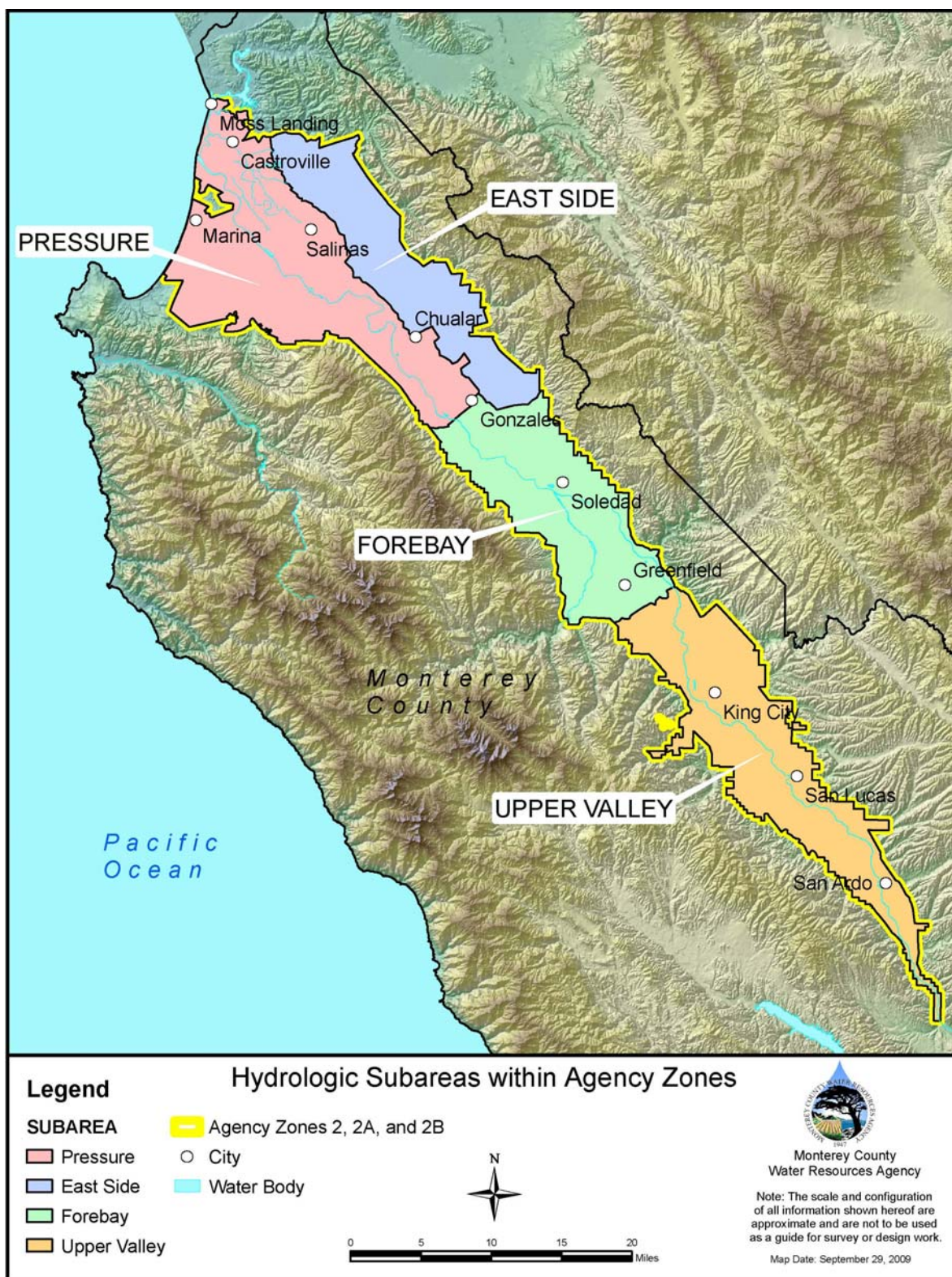


Figure 1. Agency Zones and hydrologic subareas of the Salinas Valley Ground Water Basin

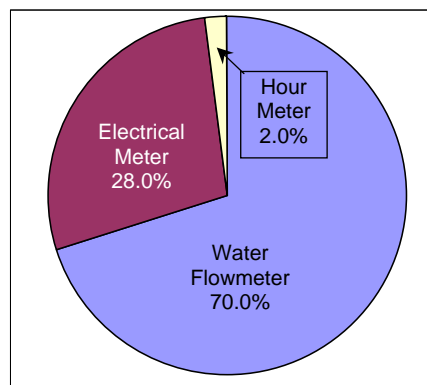
## Ground Water Extraction Data Summary (continued)

### Summary of Methods Used for Extraction Reporting

The distribution of methods used for ground water extraction reporting (agricultural and urban) for the 2010 reporting year is shown in Table 1; a percentage distribution by volume is shown in Figure 2.

**Table 1. Total extraction data by reporting method**

<i>Reporting Method</i>	<i>Acre-Feet per Reporting Method</i>	<i>Wells per Reporting Method</i>
Water Flowmeter	322,366	1,367
Electrical Meter	128,987	401
Hour Meter	9,089	18
<b>Total (2010)</b>	<b>460,443</b>	<b>1,786</b>
<b>Average ('01-'10)</b>	<b>498,281</b>	<b>1,705</b>



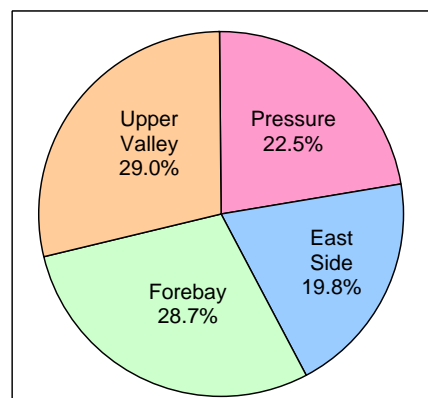
**Figure 2. Percentage distribution by volume of methods used for extraction reporting**

### Total Extraction Data by Hydrologic Subarea and Type of Use

The total ground water extractions for the 2010 reporting year are summarized by hydrologic subarea, type of use (agricultural and urban in Table 2), and percentage (Figure 3).

**Table 2. Total extraction data by hydrologic subarea and type of use**

<i>Subarea</i>	<i>Agricultural Pumping (acre-feet)</i>	<i>Urban Pumping (acre-feet)</i>	<i>Total Pumping (acre-feet)</i>
Pressure	87,880	15,663	103,544
East Side	74,512	16,788	91,300
Forebay	125,145	7,002	132,147
Upper Valley	128,883	4,568	133,452
<b>Total</b>	<b>416,421</b>	<b>44,022</b>	<b>460,443</b>
<b>Percent of Total</b>	<b>90.4%</b>	<b>9.6%</b>	<b>100%</b>



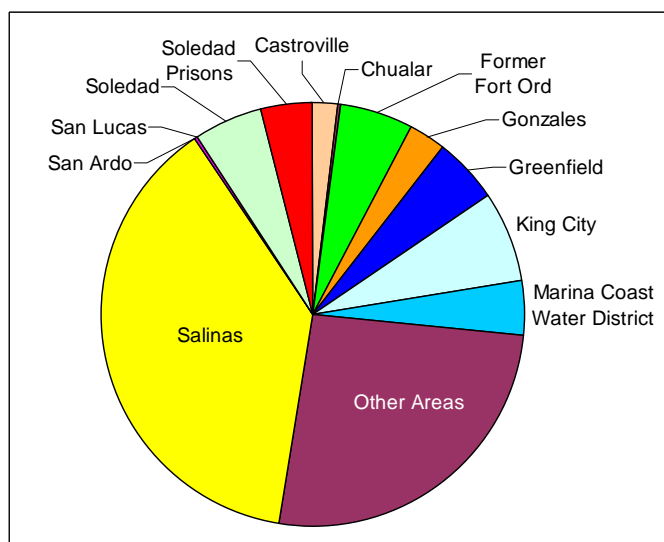
**Figure 3. Percentage of total extractions by hydrologic subarea**

### Urban Extraction Data by City or Area

The total ground water extractions attributed to urban (residential, commercial/institutional, industrial, and governmental) pumping for the 2010 reporting year are summarized by city or area in Table 3. Figure 4 shows how the total urban pumping for 2010 is apportioned among each city or area.

**Table 3. Urban extraction data by city or area**

<i>City or Area</i>	<i>Urban Pumping (AF)</i>	<i>Percentage of Total</i>
Castroville	810	1.84%
Chualar	121	0.28%
Former Fort Ord	2,469	5.61%
Gonzales	1,282	2.91%
Greenfield	2,152	4.89%
King City	3,089	7.02%
Marina Coast WD	1,765	4.01%
Other Areas	11,383	25.86%
Salinas	16,819	38.21%
San Ardo	100	0.23%
San Lucas	36	0.08%
Soledad	2,293	5.21%
Soledad Prisons	1,702	3.87%
<b>Total</b>	<b>44,022</b>	<b>100.00%</b>



**Figure 4. Distribution of urban extraction by city or area**



# Agricultural Water Conservation Plans

The Agricultural Water Conservation Plans include net irrigated acreage, irrigation method, and crop category. This information is forecasted and indicates what the grower plans to do in the upcoming year. It reflects the changing trends in irrigation methods in the Salinas Valley. Tables 4, 5, 6, and 7 show the distribution of irrigation methods by crop type for 1993, 2009, 2010, and 2011, respectively. Figure 5 (on the following page) illustrates the irrigation method trends from 1993 to 2011.

**Table 4. 1993 - net acre distribution of irrigation methods by crop type (based on 94% companies reported)**

1993	Furrow	Sprinkler & Furrow	Hand Move Sprinklers	Solid Set Sprinklers	Linear Move	Drip	Other <sup>1</sup>	Total
Vegetables	2,349	84,060	30,764	6,607	3,827	3,682	0	131,289
Field Crops	575	2,173	2,236	90	50	48	0	5,172
Berries	1	0	0	0	0	4,158	0	4,159
Grapes	261	0	0	13,347	0	15,976	0	29,584
Tree Crops	0	0	122	251	0	1,216	10	1,599
Forage	41	202	1,327	0	48	0	189	1,807
Unirrigated								N/A
<b>Total</b>	<b>3,227</b>	<b>86,435</b>	<b>34,449</b>	<b>20,295</b>	<b>3,925</b>	<b>25,080</b>	<b>199</b>	<b>173,610</b>

**Table 5. 2009 - net acre distribution of irrigation methods by crop type (based on 96% companies reported)**

2009	Furrow	Sprinkler & Furrow	Hand Move Sprinklers	Solid Set Sprinklers	Linear Move	Drip	Other <sup>1</sup>	Total
Vegetables	50	33,970	21,921	11,754	927	51,311	0	119,933
Field Crops	75	736	422	100	1,416	502	143	3,394
Berries	0	185	0	0	0	6,209	0	6,394
Grapes	0	0	0	2,045	0	34,056	0	36,101
Tree Crops	0	0	0	366	0	2,018	0	2,384
Forage	18	0	243	10	0	0	92	363
Other Type <sup>2</sup>	0	4	0	213	0	936	0	1,152
Unirrigated								6,742
<b>Total</b>	<b>143</b>	<b>34,895</b>	<b>22,586</b>	<b>14,488</b>	<b>2,343</b>	<b>95,032</b>	<b>235</b>	<b>176,463</b>

**Table 6. 2010 - net acre distribution of irrigation methods by crop type (based on 95% companies reported)**

2010	Furrow	Sprinkler & Furrow	Hand Move Sprinklers	Solid Set Sprinklers	Linear Move	Drip	Other <sup>1</sup>	Total
Vegetables	1,190	27,828	22,191	8,474	808	58,352	1,857	120,700
Field Crops	40	750	540	28	1,416	367	0	3,141
Berries	0	38	0	400	0	6,761	0	7,199
Grapes	0	0	0	678	0	36,270	0	36,948
Tree Crops	0	0	0	366	0	1,354	0	1,720
Forage	18	0	185	10	0	32	0	245
Other Type <sup>2</sup>	0	149	2,429	190	15	1,566	202	4,551
Unirrigated								6,511
<b>Total</b>	<b>1,248</b>	<b>28,765</b>	<b>25,345</b>	<b>10,146</b>	<b>2,239</b>	<b>104,702</b>	<b>2,059</b>	<b>181,015</b>

**Table 7. 2011 - net acre distribution of irrigation methods by crop type (based on 94% companies reported)**

2011	Furrow	Sprinkler & Furrow	Hand Move Sprinklers	Solid Set Sprinklers	Linear Move	Drip	Other <sup>1</sup>	Total
Vegetables	30	24,027	23,409	9,907	869	62,275	185	120,702
Field Crops	35	444	266	80	1,416	544	0	2,785
Berries	0	38	0	340	0	6,810	0	7,188
Grapes	0	0	0	620	0	33,008	0	33,628
Tree Crops	0	0	0	366	0	1,742	0	2,108
Forage	18	0	133	0	0	0	132	283
Other Type <sup>2</sup>	0	126	2,427	175	12	1,321	100	4,161
Unirrigated								6,137
<b>Total</b>	<b>83</b>	<b>24,635</b>	<b>26,235</b>	<b>11,488</b>	<b>2,297</b>	<b>105,700</b>	<b>417</b>	<b>176,992</b>

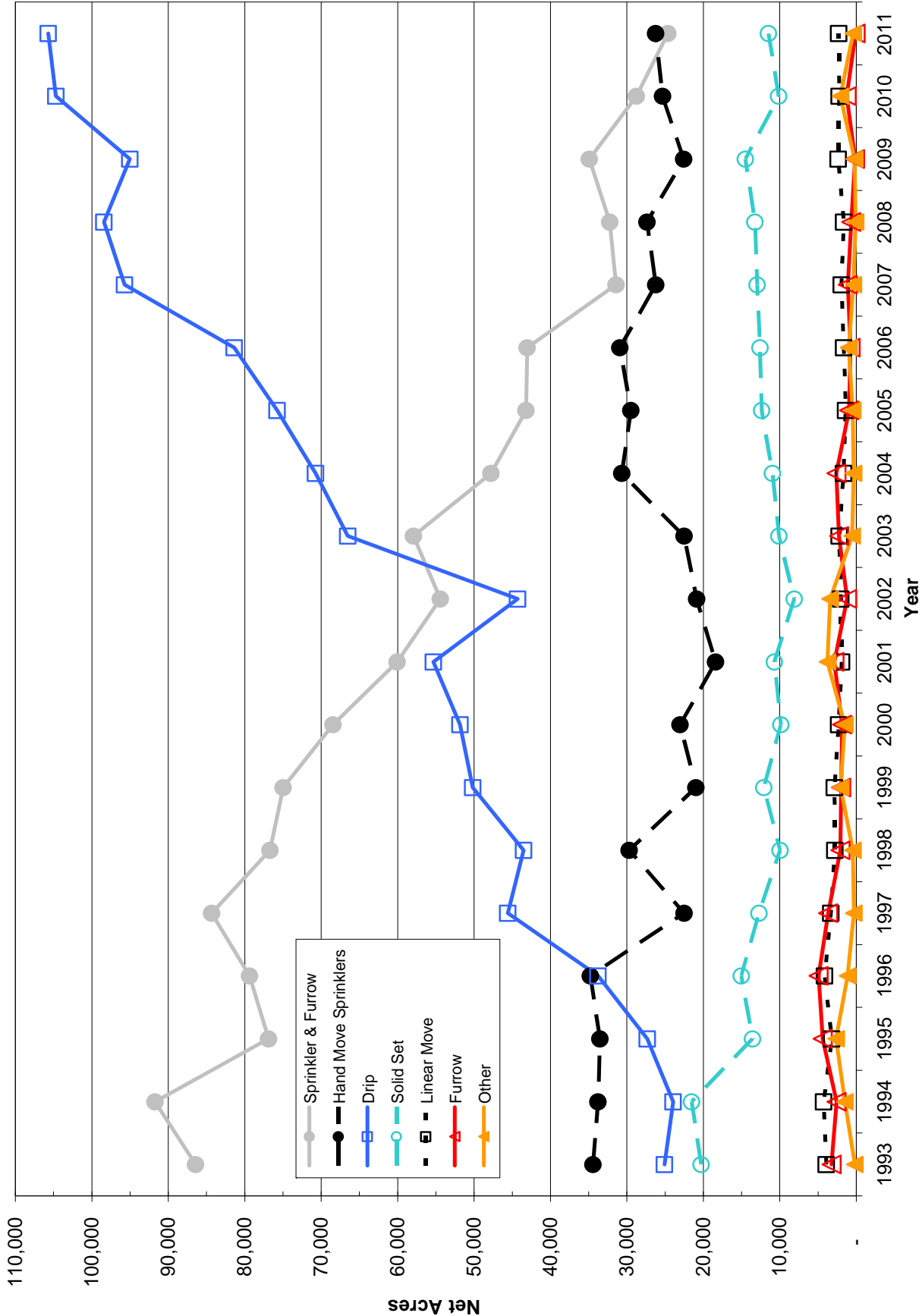
<sup>1</sup> "Other" may include an irrigation system not listed here or a different combination of systems

<sup>2</sup> "Other Type" are for other crop types not included, i.e. cactus, flower bulbs, etc.

NOTE: Percentage of companies reported varies from year to year



## Agricultural Water Conservation Plans (continued)



**Figure 5. Types of irrigation methods used in the Salinas Valley based on companies reported**

NOTE: Reported net acres vary from year to year

## Agricultural Water Conservation Plans (continued)

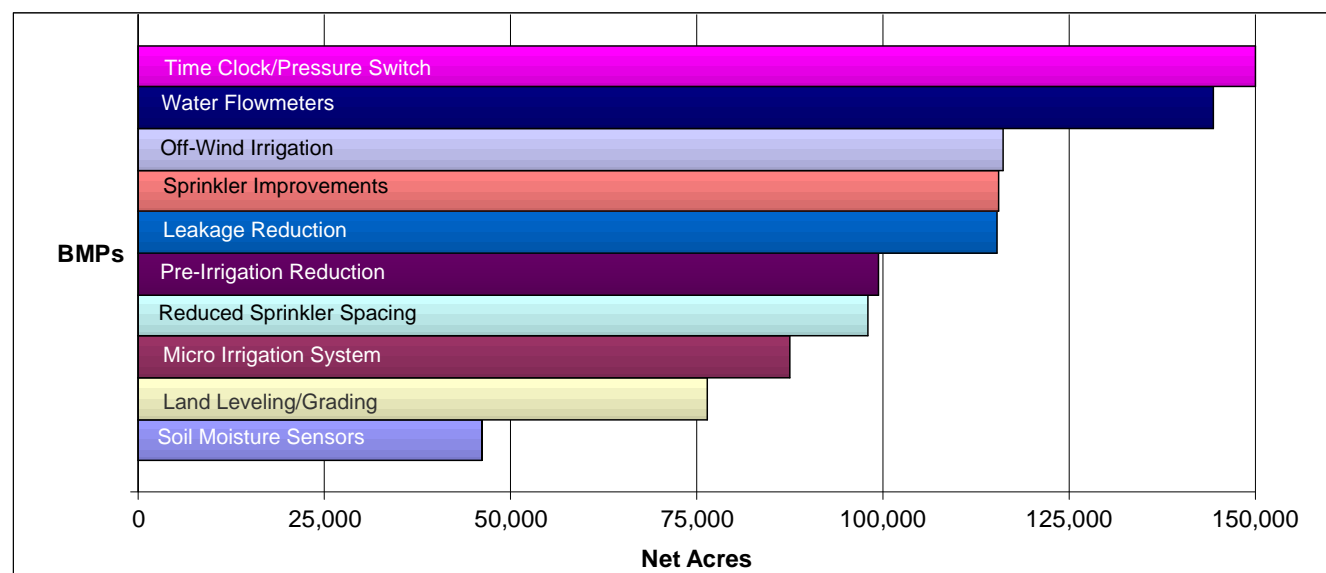
Since 1991, Salinas Valley growers have submitted Agricultural Water Conservation Plans to the Agency. Table 8 shows the number of net acres, by year, for selected Best Management Practices (BMPs) or water conservation measures which were reported to be implemented over the past eight years.

**Table 8. Agricultural Best Management Practices reported to be adopted from 2004 through 2011**

Best Management Practices	Net Acres <sup>1</sup>							
	2004	2005	2006	2007	2008	2009	2010	2011
12 Months Set Aside	6,012	3,337	2,557	2,282	768	9,043	7,447	3,285
Summer Fallow	2,025	2,535	5,797	464	703	509	692	1,944
Water Flowmeters	133,349	131,711	133,148	137,701	105,374	124,561	138,957	144,353
Time Clock/Pressure Switch	140,167	138,707	142,184	148,993	117,554	126,694	144,853	153,715
Soil Moisture Sensors	49,328	48,824	50,130	53,269	37,631	32,427	44,644	46,121
Pre-Irrigation Reduction	93,094	88,576	96,082	102,103	73,186	84,693	96,908	99,362
Reduced Sprinkler Spacing	82,292	81,068	87,159	85,105	72,287	83,046	90,065	97,926
Sprinkler Improvements	102,041	105,544	102,642	105,491	89,973	105,495	111,889	115,517
Off-Wind Irrigation	111,862	117,254	113,867	112,952	92,160	107,552	114,843	116,209
Leakage Reduction	118,125	115,117	116,662	117,655	94,694	105,702	113,820	115,255
Micro Irrigation System	62,796	68,861	74,829	77,107	55,749	71,710	67,383	87,464
Surge Flow Irrigation	6,708	7,180	7,117	4,551	4,549	7,182	8,785	11,473
Tailwater Return System	27,653	23,097	23,968	14,410	15,906	10,046	16,581	15,402
Land Leveling/Grading	71,682	69,673	71,873	73,993	60,710	56,482	73,361	76,436

<sup>1</sup> Due to unique crop rotations, it is difficult to account for each BMP used on total Crop Acres; therefore Net Acres were used.

Note: For Urban Water Conservation Plan information, see page 10.



**Figure 6. Top ten Best Management Practices forecasted for 2011 based on reported net acres**

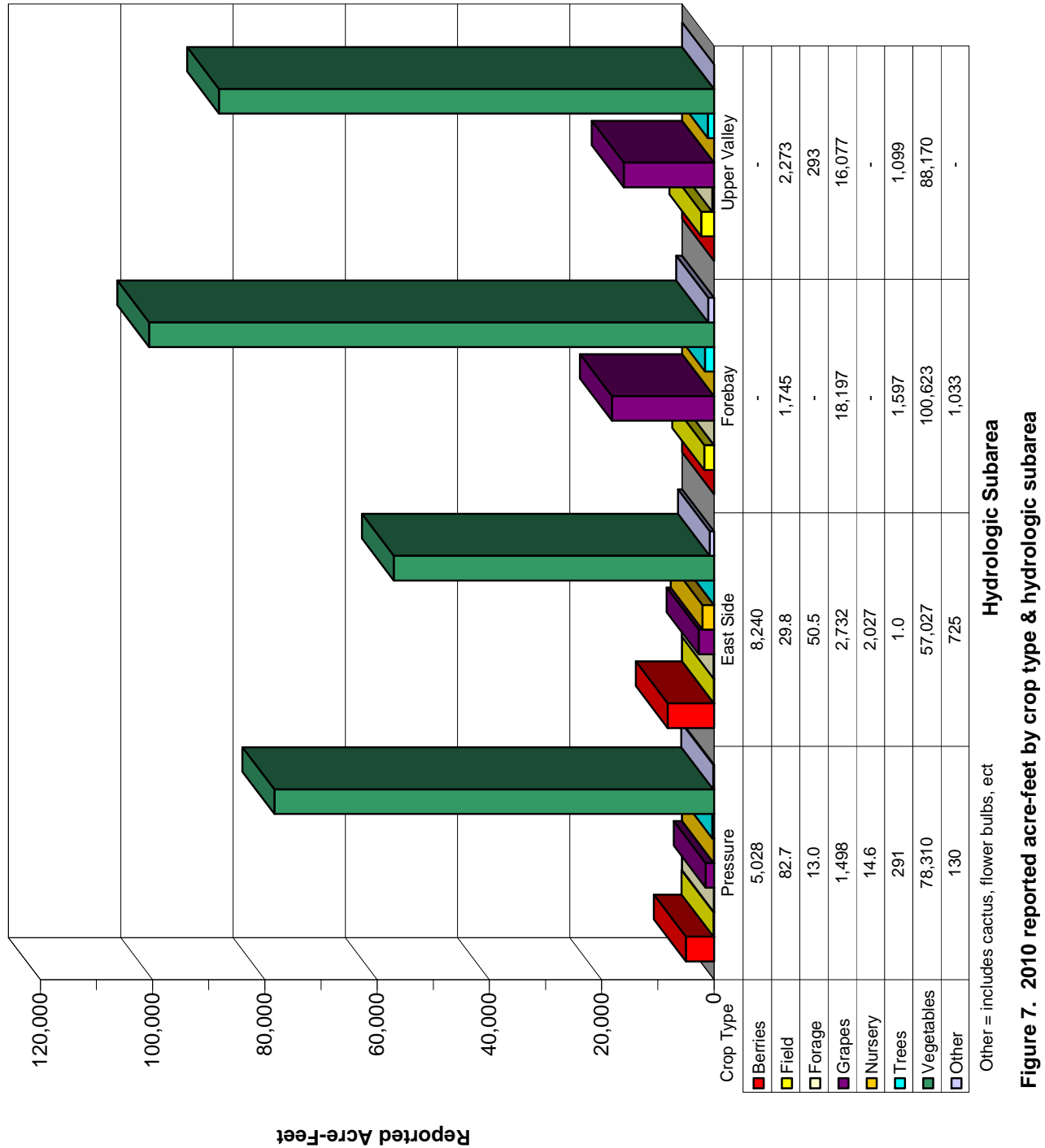
## Water and Land Use Forms

### Agricultural Water Pumped

The following three figures present the agricultural water pumped (Fig. 7), irrigated net acres (Fig. 8), and amount of water pumped per acre (Fig. 9) by hydrologic subarea and crop type. The data was compiled using the reported acreage and water pumped from the 2010 Water and Land Use Forms. The data accounts for all crop types reported and all reporting methods: Water Flowmeter, Electrical Meter, and Hour Meter.

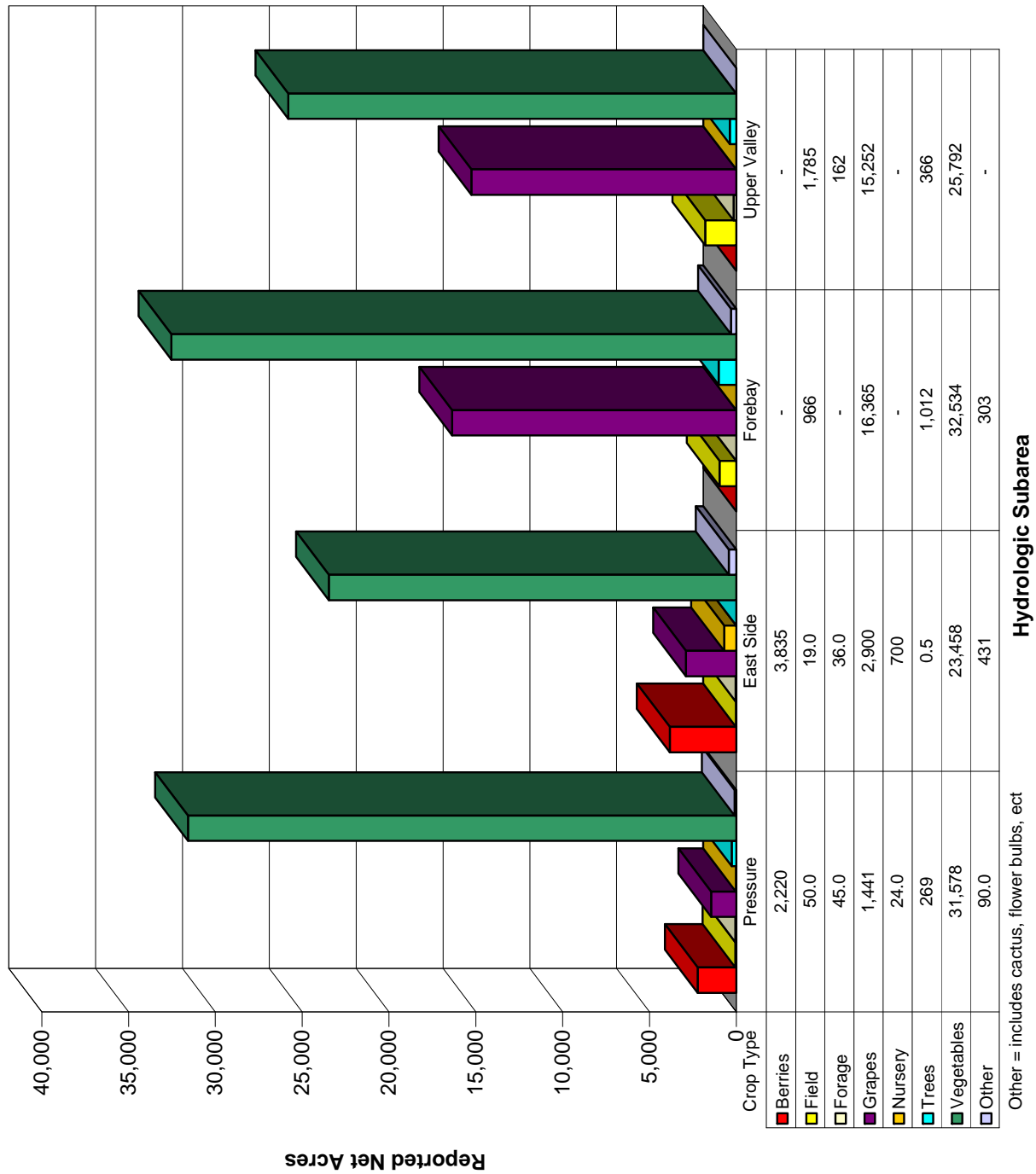
Changing weather patterns, variable soils, and crop types affect the amount of water needed for efficient irrigation. Even during a normal rain year, pumping rates will vary from one area to another and crop types will vary depending on economic demand.

## Water and Land Use Forms (continued)



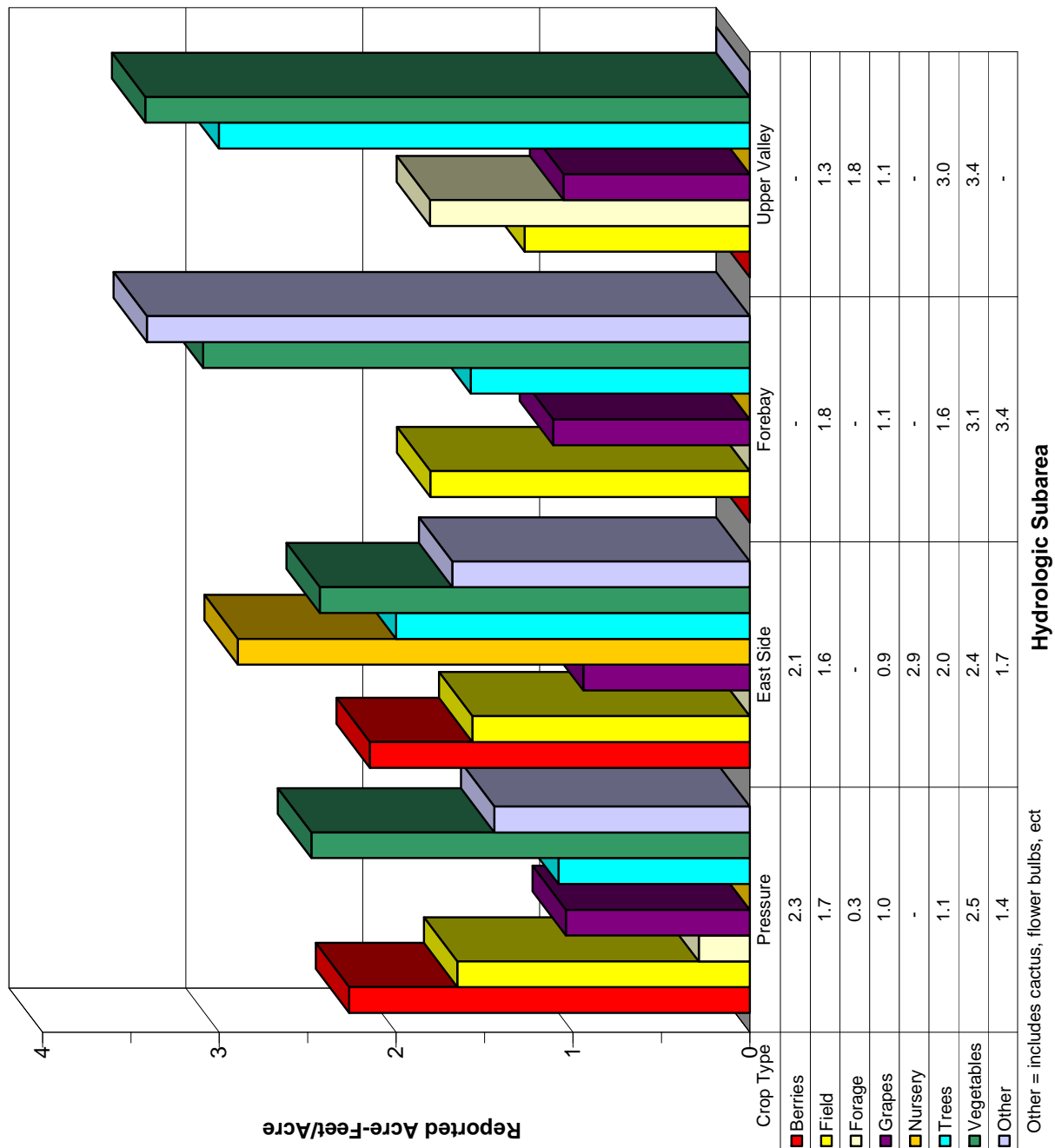


## Water and Land Use Forms (continued)



**Figure 8. 2010 reported net acres by crop type & hydrologic subarea**

## Water and Land Use Forms (continued)



**Figure 9. 2010 reported acre-feet/acre by crop type & hydrologic subarea**

# Urban Water Conservation Plans

Since 1996, the Agency has been collecting data for the Urban Water Conservation Plan program. Table 9 shows the forecasted adoption of “Best Management Practices” (water conservation measures) for the past five years, as a percentage of total acreage reported. It is important to note that, while all of the listed practices apply to “large” water systems (200 or more customer connections), not all apply to “small” water systems (between 15 and 199 customer connections). The practices that apply *only* to large systems are printed in **bold** below.

**Table 9. Urban Best Management Practices reported to be adopted from 2007 through 2011**

<b>Best Management Practices</b>	<b>2007</b>	<b>2008</b>	<b>2009</b>	<b>2010</b>	<b>2011</b>
<b>Provide speakers to community groups and media</b>	<b>67%</b>	<b>67%</b>	<b>85%</b>	<b>86%</b>	<b>85%</b>
<b>Use paid and public service advertising</b>	<b>67%</b>	<b>67%</b>	<b>85%</b>	<b>89%</b>	<b>74%</b>
Provide conservation information in bill inserts	54%	79%	96%	90%	94%
Provide individual historical water use information on water bills	80%	85%	90%	85%	92%
Coordinate with other entities in regional efforts to promote water conservation practices	82%	91%	94%	85%	94%
<b>Work with school districts to provide educational materials and instructional assistance</b>	<b>68%</b>	<b>69%</b>	<b>87%</b>	<b>87%</b>	<b>61%</b>
Implement requirements that all new connections be metered and billed by volume of use	81%	94%	98%	99%	99%
Establish a program to retrofit any existing unmetered connections and bill by volume of use	54%	58%	97%	97%	77%
<b>Offer free interior and exterior water audits to identify water conservation opportunities</b>	<b>100%</b>	<b>54%</b>	<b>79%</b>	<b>78%</b>	<b>98%</b>
<b>Provide incentives to achieve water conservation by way of free conservation fixtures (showerheads, hose end timers) and/or conservation “adjustments” to water bills</b>	<b>61%</b>	<b>67%</b>	<b>85%</b>	<b>94%</b>	<b>94%</b>
<b>Enforcement and support of water conserving plumbing fixture standards, including requirement for ultra low flush toilets in all new construction</b>	<b>100%</b>	<b>55%</b>	<b>100%</b>	<b>99%</b>	<b>78%</b>
Support of State/Federal legislation prohibiting sale of toilets using more than 1.6 gallons per flush	88%	61%	78%	76%	96%
Program to retrofit existing toilets to reduce flush volume (with displacement devices)	41%	28%	83%	87%	66%
<b>Program to encourage replacement of existing toilets with ultra low flush (through rebates, incentives, etc.)</b>	<b>67%</b>	<b>67%</b>	<b>80%</b>	<b>95%</b>	<b>89%</b>
Provide guidelines, information, and/or incentives for installation of more efficient landscapes and water-saving practices	63%	87%	90%	95%	94%
Encourage local nurseries to promote use of low water use plants	35%	62%	58%	55%	78%
<b>Develop and implement landscape water conservation ordinances pursuant to the “Water Conservation in Landscaping Act”</b>	<b>11%</b>	<b>33%</b>	<b>63%</b>	<b>68%</b>	<b>63%</b>
<b>Identify and contact top industrial, commercial, and/or institutional customers directly; offer and encourage water audits to identify conservation opportunities</b>	<b>59%</b>	<b>65%</b>	<b>57%</b>	<b>67%</b>	<b>89%</b>
<b>Review proposed water uses for new commercial and industrial water service, and make recommendations for improving efficiency before completion of building permit process</b>	<b>62%</b>	<b>72%</b>	<b>64%</b>	<b>64%</b>	<b>64%</b>
Complete an audit of water distribution system at least every three years as prescribed by American Water Works Association	36%	24%	60%	69%	74%
Perform distribution system leak detection and repair whenever the audit reveals that it would be cost effective	47%	28%	85%	98%	79%
Advise customers when it appears possible that leaks exist on customer’s side of water meter	84%	94%	100%	100%	99%
<b>Identify irrigators of large landscapes (3 acres or more) and offer landscape audits to determine conservation opportunities</b>	<b>8%</b>	<b>65%</b>	<b>57%</b>	<b>73%</b>	<b>90%</b>
<b>Provide conservation training, information, and incentives necessary to encourage use of conservation practices</b>	<b>61%</b>	<b>67%</b>	<b>81%</b>	<b>97%</b>	<b>91%</b>
Encourage and promote the elimination of non-conserving pricing and adoption of conservation pricing policies	30%	64%	84%	89%	91%
Implementation of conservation pricing policies	30%	64%	88%	93%	96%
Enact and enforce measures prohibiting water waste as specified in Agency Ordinance No. 3932 or as subsequently amended, and encourage the efficient use of water	33%	80%	78%	54%	64%
<b>Implement and/or support programs for the treatment and reuse of industrial waste water / storm water / waste water</b>	<b>26%</b>	<b>32%</b>	<b>61%</b>	<b>50%</b>	<b>53%</b>



This page left blank intentionally.



**Monterey County  
Board of Supervisors**

Fernando Armenta	District #1
Louis Calcagno	District #2
Simón Salinas	District #3
Jane Parker, Chair	District #4
Dave Potter	District #5

**Monterey County Water Resources Agency  
Board of Directors**

Vacant	District #1
Silvio Bernardi	District #2
Bill Petrovic	District #3
Doug Smith	District #4
Ken Ekelund, Vice Chair	District #5
Mike Scattini	Grower-Shipper Vegetable Association
Claude Hoover	Farm Bureau
David Hart, Chair	Agricultural Advisory Committee
Fred Ledesma	Mayor Select Committee

**Monterey County Water Resources Agency  
Executive Management**

Curtis V. Weeks, General Manager  
William L. Phillips, Deputy General Manager  
Robert Johnson, Assistant General Manager, Chief – Water Resources Planning and Management  
Brent Buche, Assistant General Manager, Chief – Operations and Maintenance  
David Kimbrough, Finance Manager, Chief – Administrative Services  
Wini Chambliss, – Administrative Services Assistant

**Summary Report Team**

Kathleen Thomasberg, Senior Hydrologist  
Tamara Voss, Hydrologist  
Chris Jannusch, Water Resources Technician  
Teresa Campa, Engineering Aide II

For more information, contact:

**Monterey County Water Resources Agency**  
893 Blanco Circle, Salinas

Mailing address:  
P.O. Box 930, Salinas, CA 93902-0930

831.755.4860  
831.424.7935 (fax)

**[www.mcwra.co.monterey.ca.us](http://www.mcwra.co.monterey.ca.us)**

