

Spring 6-10-2016

1961, Monterey County Crop Report

Follow this and additional works at: https://digitalcommons.csumb.edu/hornbeck_usa_3_b



Part of the [Arts and Humanities Commons](#), [Education Commons](#), [Law Commons](#), [Life Sciences Commons](#), and the [Social and Behavioral Sciences Commons](#)

Recommended Citation

"1961, Monterey County Crop Report" (2016). *Monterey County Crop Reports*. 68.
https://digitalcommons.csumb.edu/hornbeck_usa_3_b/68

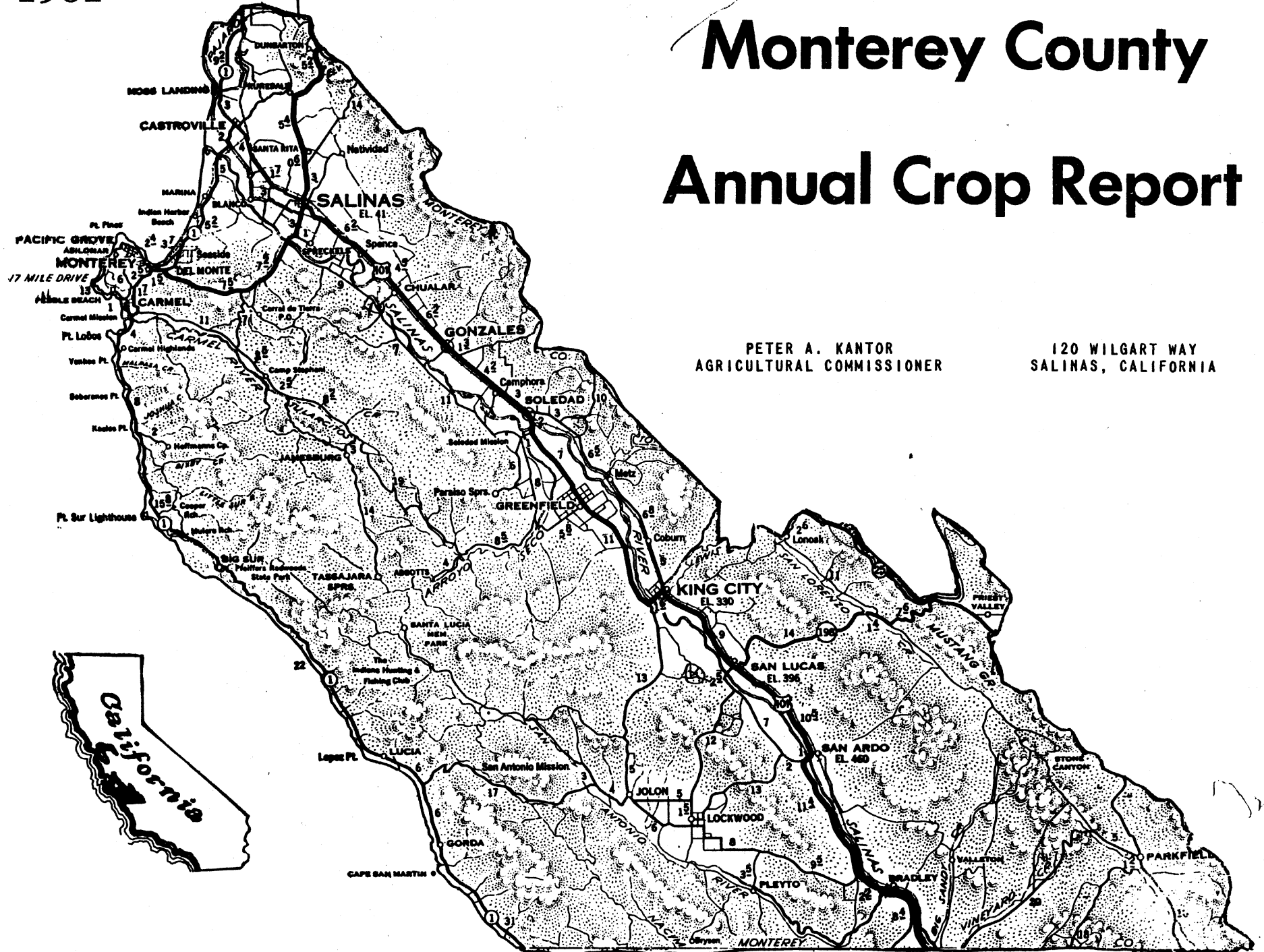
This Article is brought to you for free and open access by the Salinas River and Carmel River Groundwater Basins at Digital Commons @ CSUMB. It has been accepted for inclusion in Monterey County Crop Reports by an authorized administrator of Digital Commons @ CSUMB. For more information, please contact digitalcommons@csumb.edu.

1961

Monterey County Annual Crop Report

PETER A. KANTOR
AGRICULTURAL COMMISSIONER

120 WILGART WAY
SALINAS, CALIFORNIA



AGRICULTURE

Agriculture is the greatest single source of income in Monterey County. In 1960, the County ranked 20th in agriculture in the United States and first in the production of lettuce, artichokes, and strawberries. An estimated 60,000 carloads of vegetables are shipped annually to eastern markets.

Approximately 87% of the agricultural income originates on 144,905 acres of irrigated land, or 7% of the County. This highly productive irrigated section is separated from the rest of the State by the coast range of mountains and is generally known as the fog belt agricultural area of California. The cool humidity during the summer makes it possible to grow as many as three crops annually.

A total of 67,252 acres in Monterey County is exclusively zoned for agriculture, 25,092 acres in grazing land, and 42,160 acres of prime agricultural soils. It comprises approximately 3% of the County.

TOTAL AREA OF MONTEREY COUNTY

2,127,360 acres or 3,324 square miles.

Total Land in Farms 1,413,430 acres

Most Productive Prime Soils
Cropland irrigated --128,494
Dry farmed -----112,912
Pasture & Range ---- 49,447

Acres 290,853

Cropland

U. S.: 2.6 acres per capita
County: 3.52 acres per capita

Other Land in Farms
Cropland irrigated ---16,411
Dry farmed -----68,352
Pasture & Range-----321,034
Forest in Farms for
production of forest
products-----327,739
Brush-no grazing ---364,800
Roads, etc. -----24,241

Acres 1,112,577

There are twelve major field crops and seven major fruit crops. The principle crops are: Lettuce, celery, carrots, broccoli, dried beans, sugar beets and strawberries. Others: Tomatoes, alfalfa, vegetable and field seed crops. Non-irrigated lands: Barley and wheat.

SUMMARY OF AGRICULTURE 1960

	Value	Per Cent.
Fruit and Nuts	\$ 19,176,200.00	14.44
Apiary	18,756.00	.02
Vegetable Crops	75,812,422.00	57.08
Field Crops	18,903,425.00	14.24
Seeds	845,742.00	.63
Dairying, Livestock & Poultry	18,038,034.00	13.59
TOTAL	\$132,794,588.00	100.00

INDUSTRY

The bulk of the products of Monterey County are manufactured for export to other areas of California and the United States. Traditionally the most important industry of the County is based on Agriculture and the major products are food and allied products, with several large packaging and freezing plants processing and shipping lettuce and other vegetables, meat, fish, fruits, sugar and animal feeds. Affiliated with the food industry are the allied activities of container manufacturing, waxed paper and string, and commercial ice. A large plant for the manufacture of chocolate products was established in the Salinas area in 1960, and a plant for the preparation and packaging of jellies, jams and other food products opened in 1961. The largest beet sugar plant in the United States is also located near Salinas.

MOUNTAINS

The Santa Lucia range is the western border of the County. The mountains rise abruptly from the Pacific Ocean with hundreds of sharp peaks, some exceeding 5,000 feet. The western slopes contain the most southerly groves of redwoods on the Pacific Coast, while foothills with chaparral and oaks form the eastern valley side.

The Gabilan and Diablo ranges are the eastern border of the County, separating the Salinas Valley from the interior valleys. They are bare, low rolling hills, green in winter and golden brown in spring, summer and fall.

VALLEYS

The Salinas Valley is located between the Gabilan range on the east and the more moist and more rugged Santa Lucia mountain range on the west. The valley has about 640,000 acres of broad bottom land, it is ten to twenty miles wide, and approximately 130 miles long, with a fifteen mile wide plain near the mouth at Monterey Bay. The sides of the valley are cut by hundreds of rounded grass covered hills from 200 to 400 feet high, which makes ideal cattle and sheep grazing areas. The valley contains some of the most highly productive agricultural land in the United States.

The Carmel Valley, which extends from Carmel Bay 13 miles inland, varies in width and constitutes 25,000 acres of residential agricultural land.

WATER CONSERVATION

The Nacimiento Reservoir, located approximately 45 miles south of King City in San Luis Obispo County, is owned by the Monterey County Flood Control and Water Conservation District Zone #2. The primary purpose of the dam is to conserve water and prevent flood damage. The maximum pool is 3/4 mile wide and 16 miles long with 5,400 surface acres. Storage capacity: 350,000 acre feet. Approximately 2,000 acres surrounding the high water line was acquired for recreational purposes.

FRUIT AND NUTS

CROP	YEAR	ACREAGE	PRODUCTION	UNIT	PER UNIT	TOTAL VALUE
Almonds	1961	260	35	Ton	\$ 475.00	\$ 16,600.00
	1960	273	72	"	520.00	37,440.00
Apples	1961	600	9,800	"	65.00	637,000.00
	1960	653	9,000	"	62.50	562,500.00
Apricots	1961	1,180	5,880	"	80.00	470,000.00
	1960	1,245	8,910	"	100.00	891,000.00
Cherries	1961	100	150	"	660.00	99,000.00
	1960	100	300	"	560.00	168,000.00
Pears	1961	40	47	"	100.00	4,700.00
	1960	69	69	"	140.00	9,660.00
Plums	1961	70	180	"	150.00	27,000.00
	1960	72	200	"	120.00	24,000.00
Strawberries	1961	3,660				
	1960	3,510				
Freezer	1961		14,200	"	220.00	3,124,000.00
	1960		14,842	"	340.00	5,046,280.00
Fresh	1961		24,300	"	380.00	9,234,000.00
	1960		25,900	"	459.00	11,888,100.00
Bushberries	1961	60				
	1960	120				
Freezer	1961		270	"	200.00	54,000.00
	1960		558	"	260.00	145,080.00
Fresh	1961		54	"	500.00	27,000.00
	1960		72	"	495.00	35,640.00

FRUIT AND NUTS

CROP	YEAR	ACREAGE	PRODUCTION	UNIT	PER UNIT	TOTAL VALUE
Walnuts	1961	970	640	Ton	\$ 450.00	\$ 288,000.00
	1960	957	670	"	550.00	368,500.00
TOTAL-FRUIT AND NUTS	1961	6,940				13,981,300.00
	1960	6,999				19,176,200.00
APIARY						
Colonies	1961	5,770				
	1960	7,050				
Honey	1961		70,900	Lbs.	.11	7,800.00
	1960		172,000	"	.105	18,060.00
Wax	1961		1,440	"	.44	634.00
	1960		1,720	"	.41	705.00
TOTAL-APIARY	1961					8,434.00
	1960					18,765.00

VEGETABLE CROPS

CROP	YEAR	ACREAGE	PRODUCTION	UNIT	PER UNIT	TOTAL VALUE
Artichokes	1961	5,480				
	1960	5,515				
Fresh	1961		14,400	Ton	\$ 171.00	\$ 2,462,000.00
	1960		14,070	"	208.00	2,926,560.00
Processed	1961		6,480	"	115.00	745,000.00
	1960		5,840	"	107.00	624,880.00
Green Beans (Processing)						
Lima	1961	2,890	4,290	"	159.00	682,000.00
	1960	2,370	3,697	"	150.00	554,550.00
Snap	1961	585	5,250	"	130.00	683,000.00
	1960	350	3,220	"	127.00	408,940.00
Broccoli	1961	10,300				
	1960	10,080				
Fresh	1961		14,600	"	190.00	2,774,000.00
	1960		13,376	"	214.00	2,862,464.00
Processed	1961		12,700	"	135.00	1,715,000.00
	1960		11,730	"	135.00	1,583,550.00
Cabbage	1961	1,500	19,000	"	67.50	1,283,000.00
	1960	1,935	22,290	"	41.25	919,463.00
Carrots	1961	7,000				
	1960	6,400				
Bunched	1961		17,300	"	110.00	1,903,000.00
	1960		14,294	"	100.31	1,433,831.00

VEGETABLE CROPS

CROP	YEAR	ACREAGE	PRODUCTION	UNIT	PER UNIT	TOTAL VALUE
Carrots-continued	1961		54,000	Ton	\$ 111.00	\$ 5,994,000.00
	Cello	1960	58,944	"	99.65	5,873,769.00
Sacked	1961		26,450	"	51.00	1,349,000.00
	1960		21,054	"	48.17	1,014,171.00
Processed	1961		28,000	"	22.50	630,000.00
	1960		26,985	"	19.89	536,731.00
Cauliflower	1961	3,735				
	1960	3,420				
Fresh	1961		18,000	"	177.50	3,195,000.00
	1960		14,968	"	164.00	2,454,752.00
Processed	1961		1,560	"	135.00	211,000.00
	1960		2,035	"	120.00	244,200.00
Celery	1961	5,040				
	1960	4,825				
Fresh	1961		131,000	"	69.50	9,105,000.00
	1960		130,743	"	58.00	7,583,094.00
Cello	1961		13,100	"	110.00	1,441,000.00
	1960		11,025	"	98.00	1,080,450.00
Processed	1961		3,500	"	43.00	151,000.00
	1960		3,032	"	39.00	118,248.00
Endive	1961	531	2,230	"	135.00	301,000.00
	1960	641	5,630	"	96.00	540,480.00
Escarole	1961	145	400	"	136.00	54,400.00
	1960 *					
Garlic	1961	970	4,850	"	185.00	897,000.00
	* no breakdown 1960	1,029	5,342	"	143.20	764,980.00

VEGETABLE CROPS

CROP	YEAR	ACREAGE	PRODUCTION	UNIT	PER UNIT	TOTAL VALUE
Lettuce-Spring	1961	12,400	120,846	Ton	\$ 71.68	\$ 8,662,000.00
	1960	13,463	103,338	"	48.44	5,005,693.00
Summer	1961	15,400	148,740	"	66.83	9,940,000.00
	1960	16,869	143,050	"	71.60	10,242,380.00
Fall	1961	19,400	152,712	"	70.42	10,754,000.00
	1960	20,448	151,554	"	71.90	10,896,733.00
Onions						
Green	1961	904	7,150	"	153.00	1,094,000.00
	1960	1,003	10,995	"	185.00	2,034,075.00
Dry	1961	250	5,000	"	48.00	240,000.00
	1960	600	10,875	"	40.00	435,000.00
Processed	1961	930	18,800	"	33.00	620,000.00
	1960	523	11,005	"	30.00	330,150.00
Peas (Processed)	1961	2,520	4,340	"	74.60	324,000.00
	1960	920	1,540	"	70.20	108,108.00
Potatoes						
Market	1961	4,600	7,400	"	40.00	296,000.00
	1960	4,350	2,500	"	70.00	175,000.00
Processed	1961		55,800	"	47.00	2,623,000.00
	1960		63,000	"	45.00	2,835,000.00
Radish	1961	700	4,200	"	117.00	491,000.00
	1960	660	3,510	"	117.00	410,670.00
Romaine	1961	197	870	"	123.00	107,000.00
	1960*					

* not listed

VEGETABLE CROPS

CROP	YEAR	ACREAGE	PRODUCTION	UNIT	PER UNIT	TOTAL VALUE
Sprouts	1961	147	735	Ton	\$ 200.00	\$ 147,000.00
	1960	116	600	"	150.00	90,000.00
Spinach	1961	3,430	30,500	"	23.90	729,000.00
	1960	4,050	30,750	"	24.00	738,000.00
Squash	1961	363	3,600	"	97.00	349,000.00
	1960	446	3,120	"	120.00	374,400.00
Tomatoes	1961	8,530				
	1960	6,600				
Fresh	1961		68,200	"	148.00	10,094,000.00
	1960		57,200	"	130.00*	7,436,000.00
Processed	1961		167,000	"	30.00	5,010,000.00
	1960		114,400	"	22.50	2,574,000.00
Mixed Vegetables	1961					543,000.00
	1960					602,100.00
TOTAL VEGETABLE CROPS	1961					87,598,400.00
	1960					75,812,422.00

* F.O.B.-L.A. lug

FIELD CROPS

CROP	YEAR	ACREAGE	PRODUCTION	UNIT	PER UNIT	TOTAL VALUE
Barley	1961	55,000	33,000	Ton	\$ 45.00	\$ 1,485,000.00
	1960	53,000	37,100	"	42.00	1,558,200.00
Beans, dry						
Baby Lima	1961	46	40	"	180.00	7,200.00
	1960	100	100	"	210.00	21,000.00
Cranberry	1961	200	69	"	160.00	11,000.00
	1960	1,100	545	"	140.00	76,300.00
Garbanzos	1961*					
	1960	100	100	"	170.00	17,000.00
Large Limas	1961	3,130	3,000	"	275.00	825,000.00
	1960	1,860	1,675	"	260.00	435,500.00
Pink	1961	880	660	"	200.00	132,000.00
	1960	625	530	"	200.00	106,000.00
Red Kidney	1961*					
	1960	65	65	"	200.00	13,000.00
Small White	1961	19,400	19,400	"	190.00	3,686,000.00
	1960	22,660	24,900	"	165.00	4,108,500.00
Corn	1961	4,000				
	1960	3,250				
Grain	1961		150	"	55.00	8,300.00
	1960		150	"	50.00	7,500.00
Silage	1961		77,000	"	10.00	770,000.00
	1960		65,000	"	10.00	650,000.00
* no acreage						

FIELD CROPS

CROP	YEAR	ACREAGE	PRODUCTION	UNIT	PER UNIT	TOTAL VALUE
Hay-Alfalfa	1961	14,600	95,000	Ton	\$ 24.00	\$ 2,280,000.00
	1960	14,600	100,000	"	29.00	2,900,000.00
Hay-Grain	1961	9,000	9,000	"	20.00	180,000.00
	1960	10,600	10,600	"	24.50	259,700.00
Oats	1961	500	375	"	45.00	17,000.00
	1960	400	300	"	49.00	14,700.00
Pasture-Irrigated	1961	4,000		"	40.00	160,000.00
	1960	4,700		"	42.00	197,400.00
Sugar Beets*	1961	25,890	644,800	"	14.50	9,350,000.00
	1960	20,200	548,250	"	14.50	7,949,625.00
Wheat	1961	13,100	8,200	"	68.00	558,000.00
	1960	14,634	9,500	"	62.00	589,000.00
TOTAL FIELD CROPS	1961					19,469,500.00
	1960					18,903,425.00

* Including Federal Subsidy

SEED CROPS

CROP	YEAR	ACREAGE	PRODUCTION	UNIT	PER UNIT	TOTAL VALUE
Bean	1961	1,620	983	Ton	\$ 204.00	\$ 201,000.00
	1960	2,070	1,407	"	200.00	281,400.00
Broccoli	1961	32	49,000	Lbs.	.29	14,200.00
	1960	6	4,652	"	.43	2,000.00
Cabbage	1961	3	2,009	"	.50	1,000.00
	1960 *					
Carrot	1961	48	11,200	"	.55	6,160.00
	1960	103	27,410	"	.50	13,705.00
Cauliflower	1961	2	1,300	"	.55	715.00
	1960	13	8,556	"	.85	7,273.00
Celery	1961*					
	1960	4	1,606	"	.60	964.00
Collard	1961	7	13,700	"	.18	2,470.00
	1960	30	53,846	"	.17	9,154.00
Mustard	1961	30	24,400	"	.135	3,290.00
	1960	67	68,250	"	.13	8,873.00
Nasturtium	1961	54	14,300	"	.40	5,720.00
	1960	58	48,792	"	.40	19,517.00
Onion	1961	23	11,200	"	1.16	13,000.00
	1960	54	22,270	"	.74	16,480.00
* none						

SEED CROPS

CROP	YEAR	ACREAGE	PRODUCTION	UNIT	PER UNIT	TOTAL VALUE
Parsley	1961	9	4,530	Lbs.	\$.20	\$ 906.00
	1960	27	17,550	"	.20	3,510.00
Peas	1961	604	485	Ton	144.00	69,800.00
	1960	1,625	1,560	"	150.00	234,000.00
Radish	1961	125	105,800	Lbs.	.20	21,000.00
	1960	265	306,352	"	.20	61,270.00
Sweet Peas	1961	23	8,980	"	.56	5,030.00
	1960	28	23,189	"	.59	13,682.00
Misc.	1961					457,000.00
	1960					173,914.00
TOTAL SEED CROP	1961					801,291.00
	1960					845,742.00

* Includes seeds, bulbs
and nursery

DAIRYING, LIVESTOCK, POULTRY

INDUSTRY	YEAR	HEAD	PRODUCTION	UNIT	PER UNIT	TOTAL VALUE
Beef Cattle						
Bulls	1961	260	390,000	Lbs.	\$.20	\$ 78,000.00
	1960	258	387,000	"	.21	81,270.00
Cows	1961	5,000	5,250,000	"	.14	735,000.00
	1960	5,183	5,442,150	"	.15	816,323.00
Heifers	1961	1,000	700,000	"	.23	161,000.00
	1960	629	440,300	"	.24	105,672.00
Steers	1961	18,000	16,200,000	"	.24	3,888,000.00
	1960	18,366	16,529,400	"	.25	4,132,350.00
Veal	1961	8,200	4,100,000	"	.25	1,025,000.00
	1960	9,803	4,901,500	"	.245	1,200,868.00
Feeders	1961	48,000	19,200,000	"	.25	4,800,000.00
	1960	45,000	13,500,000	"	.26	3,510,000.00
Dairy Cows						
Calves	1961	11,500				
	1960	11,500				
Cows and Heifers	1961	4,600	414,000	"	.24	99,400.00
	1960	4,750	427,500	"	.265	113,288.00
Cows and Heifers	1961	1,725	1,984,000	"	.14	278,000.00
	1960	1,770	2,035,500	"	.15	305,325.00

DAIRYING, LIVESTOCK, POULTRY

INDUSTRY	YEAR	HEAD	PRODUCTION	UNIT	PER UNIT	TOTAL VALUE
Milk						
Market-whole milk	1961		661,000	CWT	\$ 4.63	\$ 3,060,000.00
	1960		582,428	"	4.81	2,801,479.00
Manufactured	1961		242,000	"	2.95	714,000.00
	1960		298,247	"	2.86	852,986.00
Sheep						
Ewes	1961	6,750	877,000	Lbs.	.04	35,100.00
	1960	7,000	910,000	"	.05	45,500.00
Lambs	1961	21,000	1,890,000	"	.185	350,000.00
	1960	24,000	2,160,000	"	.205	442,800.00
Wool*	1961		230,000	"	.60	138,000.00
	1960		227,000	"	.62	140,740.00
Hogs	1961	10,000	2,000,000	"	.18	360,000.00
	1960	12,000	2,400,000	"	.16	384,000.00
Turkeys	1961	450	8,000	"	.34	2,720.00
	1960	6,500	132,400	"	.315	41,706.00
Eggs	1961		107,000	each	.23	24,600.00
	1960		165,000	"	.25	41,250.00
* Including Federal Subsidy						

DAIRYING, LIVESTOCK, POULTRY

INDUSTRY	YEAR	HEAD	PRODUCTION	UNIT	PER UNIT	TOTAL VALUE
Chickens	1961	887,000				
	1960	992,183				
Fryers	1961	457,000	1,598,000	Lbs.	\$.13	\$ 208,000.00
	1960	529,679	1,810,662		.18	325,919.00
Meat Hens	1961	60,700	242,000	"	.06	14,500.00
	1960	191,027	827,965	"	.095	78,657.00
Eggs	1961		7,656,000	Doz.	.34	2,603,000.00
	1960		7,056,258	"	.37	2,610,815.00
Rabbit	1961	2,300	10,800	Lbs.	.31	3,350.00
	1960	6,791	26,945	"	.263	7,086.00
TOTAL DAIRYING, LIVESTOCK & POULTRY	1961					18,577,670.00
	1960					18,038,034.00

M O N T E R E Y C O U N T Y D E P A R T M E N T O F A G R I C U L T U R E
S A L I N A S, C A L I F O R N I A

SUMMARY YEAR 1961

FRUIT AND NUTS	1961	\$ 13,981,300.00
	1960	19,176,200.00
APIARY	1961	8,434.00
	1960	18,765.00
VEGETABLE CROPS	1961	87,598,400.00
	1960	75,812,422.00
FIELD CROPS	1961	19,469,500.00
	1960	18,903,425.00
SEEDS	1961	801,291.00
	1960	845,742.00
DAIRYING, LIVESTOCK AND POULTRY	1961	18,577,670.00
	1960	18,038,034.00
TOTALS	1961	140,436,595.00
	1960	132,794,588.00