

3-6-2018

## 1913 U.S. Geological Survey of the Monterey Quadrangles, Monterey County, California

Follow this and additional works at: [https://digitalcommons.csumb.edu/hornbeck\\_cgb\\_4](https://digitalcommons.csumb.edu/hornbeck_cgb_4)



Part of the [Arts and Humanities Commons](#), [Education Commons](#), [Life Sciences Commons](#), and the [Social and Behavioral Sciences Commons](#)

---

### Recommended Citation

"1913 U.S. Geological Survey of the Monterey Quadrangles, Monterey County, California" (2018).  
*Groundwater Basin Maps*. 25.  
[https://digitalcommons.csumb.edu/hornbeck\\_cgb\\_4/25](https://digitalcommons.csumb.edu/hornbeck_cgb_4/25)

This Map is brought to you for free and open access by the Salinas River and Carmel River Groundwater Basins at Digital Commons @ CSUMB. It has been accepted for inclusion in Groundwater Basin Maps by an authorized administrator of Digital Commons @ CSUMB. For more information, please contact [digitalcommons@csumb.edu](mailto:digitalcommons@csumb.edu).

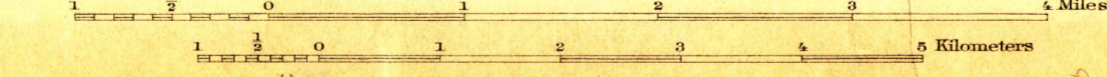


U.S.G.S.  
FILE COPY  
Ed. Div. Topographic Maps.

U.S.G.S.  
FILE COPY  
Ed. Div. Topographic Maps.

- Brush
- Timber
- Timber and brush

ENGRAVED FEB. 1913 BY U.S.G.S.  
R. B. Marshall, Chief Geographer.  
T. G. Gardine, Geographer in charge.  
Topography by C. F. Eberly and Cornelius Schumm.  
Control by Coast and Geodetic Survey and C. F. Urquhart.  
Surveyed in 1911-1912.



USGS  
Historical File  
Topographic Division

Contour interval 25 feet.  
Datum is mean sea level.

USGS  
HISTORICAL FILE  
TOPOGRAPHIC DIVISION

Edition of April 1913.

JUN 30 1913 3815

MONTEREY CAL.

(BERONDA)