

New leadership

The search for a permanent president begins this month. The presidential search committee is being chaired by Roberta Achtenberg, a member of the CSU Board of Trustees.



*Interim President
Diane Cordero de Noriega*

As the 2004 academic year drew to a close, the Board of Trustees appointed Dr. Diane Cordero de Noriega interim president of CSUMB. Formerly the university's provost and vice president for academic affairs, Cordero de Noriega is the first Latina president in the history of the CSU system. ♦

Salary update

General salary increases (GSIs) for bargaining unit groups are negotiated at the CSU system level. There are no "automatic" GSIs for CSUMB employees resulting from the Compact that was negotiated last year between the CSU system and Governor Arnold Schwarzenegger.

For represented employees in certain labor units, compensation issues are still in the bargaining phase. To date, the CSU has executed agreements with trades (unit 6), physicians (unit 1), operating engineers (unit 10) and academic student employees (unit 11). Agreements are still being negotiated with CSUEU Units 2,5,7 and 9, APC (unit 4), public safety (unit 8) and the CFA (unit 3).

A 3.5 percent merit salary increase pool has been approved by the Chancellor's Office for management and confidential employees.

As each bargaining unit completes negotiating its contract, specific information regarding the GSI and other negotiated items will be forwarded from the Chancellor's Office.

CSUMB boosts local economy

CSUMB does more than turn out job-ready graduates. It helps to stoke the Central Coast economy with more than \$125 million in annual spending and generates some 3,300 jobs in local communities, according to a recent study.

The first study of the economic impact of the 23-campus CSU system found that for every \$1 the state appropriated, \$4.41 was generated in additional spending for wages, construction, housing, food and other areas.

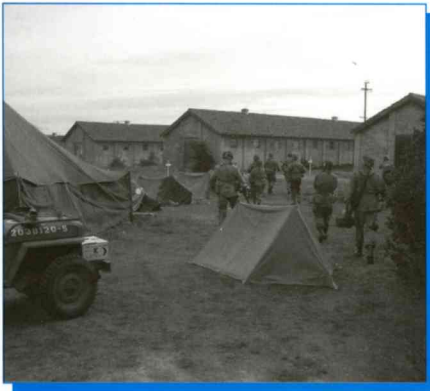
For CSUMB, the expenditures break down this way:

- \$59 million in operational expenses to run the university each year (payroll, services, supplies)
- \$33 million a year, over the last three years, in new construction
- \$6 million spent by students who come to campus from outside the area

(continued on page 4)

Re-enactors bring World War II battle to Fort Ord

Fort Ord will soon become a German town on the Belgian border during World War II. That's the scenario, as the



Re-enactors staging the event during last year's mock battle here.

the Allied assault on the "West Wall" of Germany in the

World War II Research and Preservation Society comes to CSUMB.

Approximately 150 people representing American, British and German troops are set to re-enact

autumn of 1944. A variety of tanks, motorcycles and other military vehicles will be involved.

The public may view the "battle" at 3:00 P.M. on Sept. 10. Parking will be available in the lot located at Fifth Street and Third Avenue, where tickets should be purchased by 2:00 P.M. Tickets may also be obtained by calling 582-3595 or online at the foaa.CSUMB.EDU website.

The World War II Research and Preservation Society is a California non-profit organization that has been active in historical research and living history re-enactment for over a decade. The Fort Ord Alumni Association sponsors the event. Since its inception in 1996, the association has awarded 57 scholarships to CSUMB students. ❖

CSUMB expands its international reach

In July, CSUMB welcomed its first group of international students to the newly created American Language and Cultures program.

The program brought 20 students from Japan for its inaugural three-week session. The visitors practiced



Holly White

English, learned about American culture and acquired basic survival skills for a stay in the United States. Students lived with host families in the community.

"Our goal is to increase the English fluency of these students. They already speak English; they're interested in mastering English," said Holly White, CSUMB's international programs adviser.

Leading the program is Dr. Chris Hasegawa, who joined the university in 1995 as a founding faculty member. He has been a professor, department chair, develop-

ment officer and is now the director of the Office of Extended Education and International Studies.

Hasegawa is responsible for the development and expansion of continuing edu-



Chris Hasegawa

cation, conferences and international programs.

Hasegawa and White traveled to China and Japan this summer to spread the word about CSUMB's growing international programs and to recruit students.

In the future, CSUMB hopes that classes for international students will also be useful for incoming ESL college students from the Salinas Valley, Hasegawa said. ❖

A little inconvenience now – but big gains later

A project to replace deteriorating 50-year-old telecommunications wiring inherited from the Army is now under way. It promises improved performance of campus telephone, e-mail and Internet services — and some traffic disruption during construction.

The project is called the TIU — Telecommunication Infrastructure Upgrade. It's part of an overall CSU program to modernize the telecommunications networks at all 23 campuses. At CSUMB, it's a \$14.5 million project that will span 18 months. The project is funded through Propositions 1A and 47.

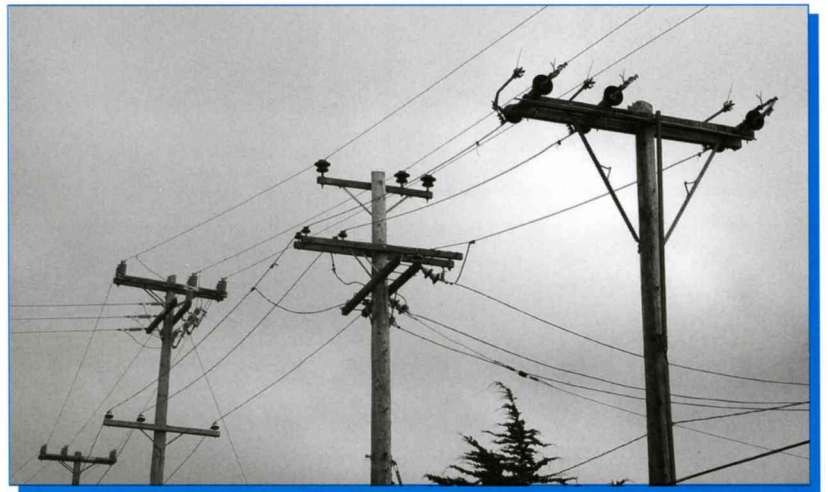
Michael Tebo, project manager in Campus Planning & Development, is responsible for overall coordination. He's being assisted by Katie Timmerman, a consulting construction manager, and Chris Taylor, director of IT's Network Services. Two construction stages are involved. The first, which began last month, involves trenching to install underground conduit, routing of new telecommunications cabling and improvements to interior wiring and distribution systems in most campus buildings. This stage of the project will include expanding Building 41 with a new structure to serve as an IT telecommunications "nerve center," and a new building will be constructed to house electrical distribution equipment. The second stage involves replacement of terminal equipment, such as routers and switches, to provide interconnection to individual workstations.

Other notable outcomes of the project will be significant improvements to Sixth Avenue. All overhead utilities will be undergrounded and existing utility poles removed. New street lighting will be installed. Most importantly, a portion of Sixth Avenue will ultimately be closed to vehicular traffic, becoming a pedestrian mall from the World Theater parking lot to the University Center.

Fourth Avenue, along Bldg. 97 between Third and First Streets, will be closed for construction during September.

Open trenches will be commonplace during the first construction stage. Trenching to install underground

utilities will take place on most campus streets, most notably along Sixth Avenue and Third Street. To minimize disruption to motorists, crews will keep no more than 200 feet of a trench open at any time. To avoid the need to excavate again to lay electrical conduit and natural gas lines for the new library and for other campus electrical improvements, those lines will be positioned in the same trenches as the telecom conduit.



Many old utility poles from the Fort Ord era will be removed and new cables will be undergrounded.

During the first stage of the project, the telecom wiring will be upgraded in most campus buildings. "To minimize disruption to daily activities, the work in the buildings will be done overnight from 10:30 P.M. to seven A.M.," said Tebo. "The construction workers are expected to clean up the work areas at the end of each night's activity, before university employees and students arrive in the morning." Building 23, University Human Resources, is the first structure to be rewired. In Building 18, considerable disruption can be expected while raised floors are installed throughout the computer labs during the winter recess.

Newly constructed campus buildings will not be rewired since they already offer adequate telecom service. This also applies to the residential halls, which are owned by the CSUMB Foundation and not included in the state-funded modernization project.

(continued on page 4)

Sue Borrego is new vice president of Student Affairs



Sue Borrego leads Student Affairs

Dr. Susan Borrego has joined CSUMB as vice president for Student Affairs. Most recently, she served as associate vice chancellor and dean of students at the University of Arkansas, where Borrego provided leadership for the

Division of Student Affairs on a campus serving over 17,000 students. Before going to Arkansas, she was associate dean/director of minority student affairs at Caltech.

At CSUMB, Borrego provides administrative leadership for all aspects of the campus student life program. She also leads the ongoing development of CSUMB's enrollment management plan.

Borrego has a Ph.D. in education from Claremont Graduate School, an M.A. from Azusa Pacific University in social science and a B.A. from Northwest Nazarene College in Speech/Communication. ❖

TIU (continued from page 3)

About nine months from now, paralleling the TIU work, trenching will begin to install water and sewer lines for the new library and other structures to be built in the future heart of the campus — the "Crescent." The next two years will see much road work and some inconvenience to motorists and pedestrians. The payoff will come upon completion when the CSUMB campus will enjoy reliable, high-performing telecom services for many years to come.

For a more detailed review of the TIU project, visit the CDO.CSUMB.EDU website. For regular updates regarding disruptions due to construction, visit the CSUMB.EDU/news website. ❖

Marsha Moroh named interim provost

Dr. Marsha Moroh has been named interim provost and vice president for academic affairs, replacing Dr. Diane Cordero de Noriega, who was named to the position of interim president.

Moroh has been with the university since January 1995, when she joined the staff as a founding faculty member and professor in Interdisciplinary Studies. Since 1996, she has served as dean of the College of Science, Media Arts and Technology, also known as SMART. ❖



Interim Provost Marsha Moroh

Economic study (continued from page 1)

- \$26 million spent on auxiliary businesses (bookstore, food services, housing)
- \$500,000 that students contribute in community service through service learning programs and projects (approximately 54,000 hours valued at \$9 per hour)

In addition to sustaining thousands of jobs in local communities, the university generates more than \$10 million per year in taxes.

The building boom at the campus can be seen in the construction of the Chapman Science/Academic Center in 2003, three new dormitories in 2004, and the opening this past spring of the Alumni and Visitors Center.

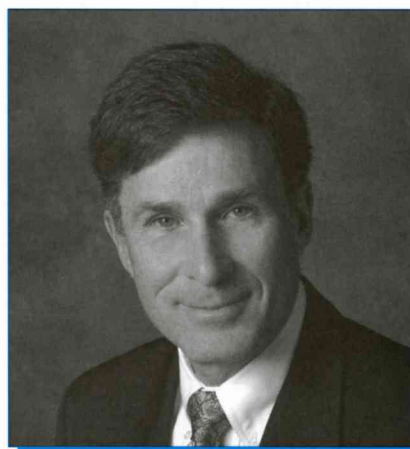
To view all the CSU results from this study, visit the www.calstate.edu/impact website. ❖

Hale, Kvitek appointed interim deans

Dr. Sandy Hale has been named interim dean of the College of Professional Studies. He joined CSUMB in 1997 and served as chairman of the School of Business. Hale replaces Dr. Dorothy Lloyd, who has retired. The College of Professional Studies includes the School of Business, the School of Education, the Liberal Studies Department, and the Department of Health, Human Services and Public Policy.

Dr. Babita Gupta has been named interim chair of the School of Business. She joined CSUMB in 1996.

Dr. Rikk Kvitek is now the interim dean of the College of Science, Media Arts and Technology. He joined



Rikk Kvitek

CSUMB in 1996 and was previously a professor in Earth Systems Science and Policy. Last year, Kvitek was awarded the CSU Wang Family Excellence Award in the Sciences. ❖

Summer conferences reach out to community — and beyond

Matrix conference helps children

The first Matrix Outcomes Model Conference was held during July. The three-day event, sponsored by the Institute for Community Collaborative Studies (ICCS), drew 135 participants from around the country.

When services are delivered to clients, the private or government agencies paying for them want to know if those services made a difference in the clients' lives. Methods for answering that question by tracking results were featured at the conference. Presenters discussed the importance of using tools like the Matrix with health and human services programs.

Representatives from programs serving a wide variety of clients learned from their peers how to collect information and design outcomes using the Matrix model. Locally, the Girl Scout Matrix helps volunteer leaders track their members' progress and improve program activities from Brownies through senior levels.

"We translated national standards into a Matrix model that tracks each level of girl scouting. We see program progression and give volunteer leaders new resources based on our data. The results tell us we are doing what we say we want to do," said Brenda Whitsette, executive director of Girl Scouts of Monterey Bay.

Jerry Endres, ICCS director, has announced a partnership with the California Department of Social Services, Office of Child Abuse Prevention, to use the Matrix Model with 30 family resource agencies and their child welfare partners. ICCS's online Matrix system will assist these county-based programs to improve public/private partnerships for early intervention in preventing child abuse. In addition, ICCS will manage a project in partnership with Harvard University to research and publish strategies for prevention of child neglect and abuse. ❖

Noted speakers at reading conference

In August, over 140 participants attended a three-day conference on reading instruction co-sponsored by CSUMB's new Center for Reading Diagnosis and Instruction. The keynote speaker was Dr. Reid Lyon, a noted research psychologist and influential proponent of research-based approaches to reading instruction. The program featured an extensive list of other nationally recognized leaders in reading, speech-language pathology and special education. The conference focused on the best leadership practices that characterize effective schools and promote a deeper understanding of language and reading processes. ❖

World Theater performing arts for September & October

Perla Batalla

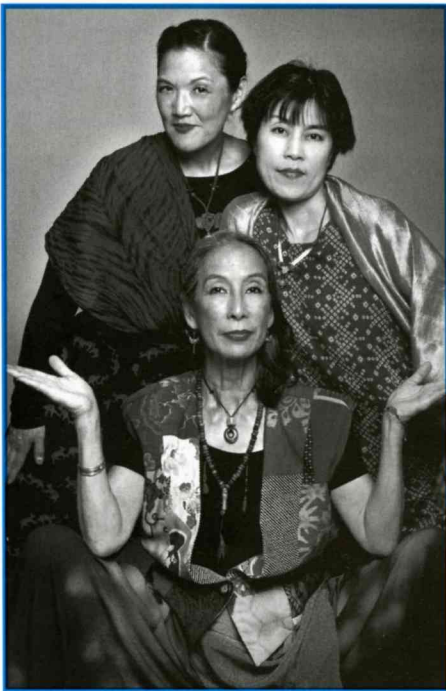
September 29, 2005, 7:30 P.M.

A vocalist, composer and arranger, Perla Batalla first gained international attention as a backup singer for Leonard Cohen and k.d. lang. Her repertoire cuts across genre and language, combining traditional Mexican folk melodies, powerful ballads and pulsing rhythms. Comfortable in both English and Spanish and proud of her Mestiza heritage, Batalla's singing is an experience to be savored at every opportunity. The evening will feature the world premiere of Batalla's new CD, which has been co-commissioned by the World Theater. Tickets for CSUMB staff and faculty are \$22.



Nancy Santullo

Perla Batalla



Shane Sato

The Triangle Project: Journey of the Dandelion

October 26, 2005, 7:30 P.M.

An international and multidisciplinary collaboration, Journey of the Dandelion explores the lives and musical journeys of three significant women of Japanese ancestry. From Japan to three generations in America, their songs, rhythms and stories encompass the complex layers of history, family roots and the cross-cultural pollination that defines them. Tickets for CSUMB staff and faculty are \$22.

For tickets or further information about either of these performances, go to the CSUMB.EDU/worldtheater website or call the World Theater box office at 582-4580, Monday-Friday, noon to 4:00 P.M. All dates, programs and artists subject to change. For disability-related accommodations, please contact the box office no later than 10 business days prior to the event. ❖

Journey of the Dandelion

Promotions and transfers

Maria Amezcua, Community Service Specialist — UPD
Leslie Arutunian, Special Assistant to the Provost — AA
Babita Gupta, Full Professor — BUS
Kathlene Hanson, Associate Librarian & Tenure — Library
Chris Hasegawa, Dean-Extended Ed and Director,
International Programs — EE and International Programs
Daniel Jachno, Workstation Technician — TSS
Stephanie Johnson, Assistant Professor — VPA
Earl Lawson, Police Lieutenant — UPD
Roberta Long, Associate Professor — ITCD
Steve Moore, Full Professor — SEP
Cecilia O'Leary, Full Professor — HCOM

Johanna Poethig, Assistant Professor — VPA
Linda Rogers, Full Professor — LS
Ziad Sarriddine, Lead Network Systems Analyst — ISNS
Brian Shaw, Software & Desktop Mgt. Coordinator — TSS
Will Shephard, Full Professor — TAT
Mahito Shirako, A/V Workbench Technician — ISNS
Brian Simmons, Full Professor — HHSP
Michal Sipal, Administrative Analyst/Specialist — FA
Ernie Stromberg, Associate Professor & Tenure — HCOM
Eric Tao, Full Professor — ITCD
Paoze Thao, Full Professor — LS
Karen Warburton, Science Lab Support Technician — SEP
Swarup Wood, Associate Professor & Tenure — SEP

New employees

Kent Adams, Assistant Professor - Exercise Science — HPWE
Ben Adler,* On-Air Program Host & News Reporter — KAZU
Ricardo Alcaino, Director of Diversity, Equity and Employment Practices — UHR
Richard Aldrete, Baseball Coach — ASRH
Emily Alvelo,* Assistant Resident Director — ORL
Daniel Andrada, Police Officer — UPD
LaDonna Andrews, Student Accounts Receivable — A&F
Marcus Battle, Budget Analyst — A&F
Andrea Dominquez-Blanco,* Resident Director — ORL
Sue Borrego, VP, Student Affairs — SA
Cynthia Bush, Payroll Technician — UHR
Alexandra Chappell, Administrative Support Coordinator — FS&O
Laura Chen, Alumni Relations Assistant — UA
Katherine Close, Bibliographic Services Assistant — Library
Andrew Coile, Academic Systems Analyst/Programmer — ISNS
Shirley Coly, Development Officer — UA
Ron Deller, Lead Construction Manager/Project Manager — CD&O
Alaina Dunn,* Assistant Resident Director — ORL
Maricel Gawaran,* Human Resources Specialist — UHR
Natalie Hargraves, Administrative Support Coordinator — FYS
John Harp, Administrative Support Coordinator — CalStateTEACH
Jene Harris, Program Support Specialist — ED
Ramona Hunter,* Customer Service Specialist — ORL
Andrea Kenney, Softball Coach — ASRH
Wynetta Lee, AVP, Academic Planning Research & Graduate Studies — AA
Daniel Machado, Night Shift Compliance Assurance Supervisor — CD&O
Micky McGuire, Student Affairs Budget Analyst — SA
Christina Milesi,* Senior Research Scientist — SEP
Tania Mitchell, Assistant Professor - Service Learning — SL
Snehal Naik, Student Activities Coordinator — SA
Nancy Rojas, Administrative Support Assistant — AA
Leilani Saez, Assistant Professor - Special Education — ED
Lynne Stamoulis, AVP, Institutional Effectiveness — AA
Carolyn Tomlin, Conference & Event Services Manager — CES
Christopher Villanueva, Credential Analyst I — CalStateTEACH
Ashlie Weisbly, Financial Aid Technician — FA
Roger Zeedik, Director of Staff and Mgt. Personnel — UHR

Probation passed

Terryn Ashley, Lead Payroll Technician — UHR
Sandra Banks, Accounting Systems Analyst — CMS
Laurie Dixon, Budget Analyst — A&F
Sharlene Erwin, Administrative Assistant — CD&O
Stacey Jones, Administrative Support Assistant — FA
Douglas Lazzaroni, Building Service Engineer — FS&O
Linda Parrish, Administrative Support Coordinator — EOSP
Terry Simon, Lead Customer Service Specialist — CSC
Rachel Wood, Academic Advisor — AA
Lynn Yee, Lead Customer Service Specialist — CSC

Departures**

Louis Algaze, ISNS — hired March 2002
Matthew Brown, UPD — hired January 2002
Jonni Davenport, G&C — hired January 2004
Salina Diiorio, AA — hired March 2000
Susan Elwood, LS — hired September 2003
Meggie Quan Gan, ISNS — hired July 2004
Hilario Garcia, A&R — hired October 1998
Dorothy Lloyd, CPS — hired September 1994
Ryan McRae, SDR — hired September 2004
Lucha Ortega, SA — hired November 1997
Irazu Ma Suy Ortiz, UPD — hired July 2002
Joyce Smith, FA — hired January 1998
Scott Warrington, UA — hired May 2000

Notes

* Foundation employee

** Separation dates previously noted on internal announcements may not coincide with an employee's last day on the payroll, which is reflected in the list above. The above-listed former employees have given permission for their names to be published in *Campus Connection*.

Thanks to University Human Resources for this information.

Warrington, Ortega take new posts

Scott Warrington, vice president of University Advancement, has left CSUMB for the same position at Cal Poly Pomona. Dr. Lucha Ortega, associate vice president for Student Affairs, also resigned this summer. She has accepted the position of vice president of Student Services at Shasta Community College.

Meet Patrick ("Andy") Sierra

What's your job title?

Maintenance mechanic.

How long have you worked for CSUMB?

Since November of 2000.

Do you like it here?

I love my job. We're our own bosses and every day is different. It's nice to see the campus grow and to have a say in what happens.

What's a typical workday like?

I pick up the work orders in the morning, make contact with my customers, go to the job site, order parts, if necessary, and get the job done.

What's most interesting about your job?

Interaction with the people in different buildings. I take care of certain buildings in an assigned zone.

Tell us about your personal life

I've been married 25 years and have four kids, with two of them still at home.

What's something most people here don't know about you?

As a musician, I play percussion — the Latin drum instrument Timbales. I'm with two different bands: the Chicano All Stars and my own band, called Ritmo. It's a tribute to the Santana band. Although I love my job, it actually allows me to pursue my dream as a musician.



Campus Connection is published during the academic year by CSUMB University Advancement. Don Porter, editor; Joan Weiner, contributor. Please use the *Event Publicity & News Intake Form*, available under Conferences/University Advancement on FirstClass, to submit news ideas or stories. Send the form to don_porter@csumb.edu. To be considered for publication, editor must receive items by the 10th day of the month preceding month of publication. Items are published on a space-available basis and subject to editing. Content of this newsletter is based on information available at press time. Submit *Event Publicity & News Intake Form* by e-mail, by fax at 831-582-4117, or by disk/paper to Don Porter, Public Affairs, Building 97. Phone: 831-582-3302.

NEWS ABOUT CSUMB'S STAFF & FACULTY
CAMPUS CONNECTION
VOLUME 7 • NUMBER 1
SEPTEMBER 2005

INSIDE...

- ◆ NEW LEADERSHIP TAKES OFFICE
- ◆ HOW CSUMB HELPS THE LOCAL ECONOMY
- ◆ WWII RE-ENACTMENT ON THE WAY
- ◆ EXPANDING OUR INTERNATIONAL REACH
- ◆ BIG CHANGES IN STORE WITH "TIU" PROJECT
- ◆ PEOPLE ON THE MOVE AT CSUMB
- ◆ WORLD THEATER PERFORMANCES

DELIVERY PREFERENCE

If you wish to access this newsletter on the Internet rather than in paper form, please send an email expressing this preference to don_porter@csumb.edu. You may also check the box below and return this page to Don Porter, Building 97, 100 Campus Center, Seaside, CA 93955-8001. You may view *Campus Connection* on the Web at CSUMB.EDU/news.

I do not wish to receive a hard copy of future issues of *Campus Connection*.

Janie Silveria
Bldg.12