

Spring 6-11-2016

2005, Monterey County Crop Report.

Follow this and additional works at: https://digitalcommons.csumb.edu/hornbeck_usa_3_b



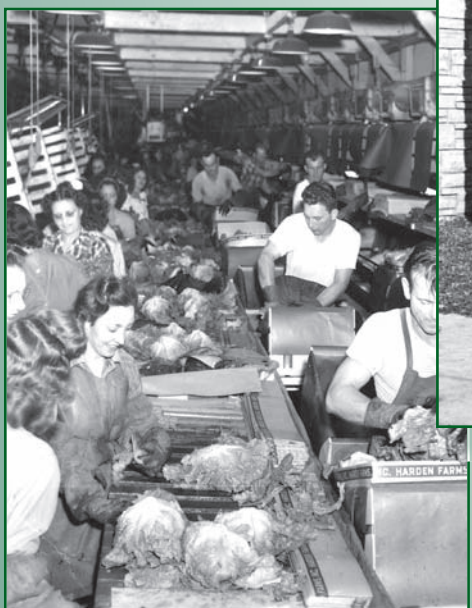
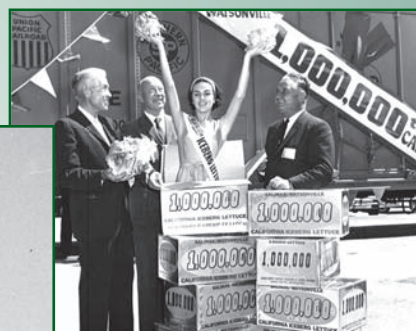
Part of the [Arts and Humanities Commons](#), [Education Commons](#), [Law Commons](#), [Life Sciences Commons](#), and the [Social and Behavioral Sciences Commons](#)

Recommended Citation

"2005, Monterey County Crop Report." (2016). *Monterey County Crop Reports*. 24.
https://digitalcommons.csumb.edu/hornbeck_usa_3_b/24

This Article is brought to you for free and open access by the Salinas River and Carmel River Groundwater Basins at Digital Commons @ CSUMB. It has been accepted for inclusion in Monterey County Crop Reports by an authorized administrator of Digital Commons @ CSUMB. For more information, please contact digitalcommons@csumb.edu.

Monterey County **CROP REPORT 2005**



Recognizing Grower-Shipper Association for 75 Years of Service.

Grower-Shipper Association of Central California

From its simple beginnings in 1930, the Grower-Shipper Association of Central California has grown from a handful of members producing iceberg lettuce to over 300 members spanning four Central Coast counties and virtually every commodity mentioned in the Monterey County Crop Report (vegetables, berries, mushrooms and wine grapes). The strength and influence of the Association, much like the wide variety of regions and commodities it covers, comes from the diversity of the membership. Growers, shippers, coolers, harvesting and packing companies, salad plants and other processors, wineries, seed companies and numerous ancillary businesses are the types of individuals and companies who belong to GSA. From the largest vertically-integrated agribusiness firms to the smallest one-person farming operation, the Grower-Shipper Association is truly a "Who's Who" of Monterey County agriculture.

As Grower-Shipper's membership has grown, so too have the challenges facing the industry. The Association has continuously expanded and broadened its programs and services to meet the members' needs. GSA has, since its inception, represented the membership at the local, regional, state, and federal levels. Government and regulatory affairs, legislative and public policy advocacy, legal services, labor relations, personnel management and human resources, food safety, worker safety and health, land use, environmental compliance, water and air quality, farm labor availability, worker and affordable housing, and specialty crop protection are just a few of the many items on the organization's agenda.

Grower-Shipper plays a strong role in working with other agricultural associations and government agencies on issues important to agriculture. In addition to its long-standing effectiveness as an advocate on behalf of its membership, GSA takes justifiable pride in its reputation as a "liaison/facilitator" between the industry and government. Whether it is working with legislators in drafting laws, local elected officials in crafting ordinances, or providing feedback to, and working with, regulators on the best methods to enforce those laws and ordinances, GSA is recognized by all as the "link" between industry and government to keep Central Coast agriculture viable.

As is readily apparent, the variety and quality of services, programs, and benefits the Association provides its membership is extensive, impressive - and growing. GSA's services fall into three major categories: representation, advocacy and education. There is no question that Grower-Shipper's educational and training programs are unrivaled among local and regional trade associations. This past year for example, GSA has conducted or presented almost 100 workshops, seminars, and training sessions on a myriad of subjects such as: wage and hour issues, heat stress regulation, labor and employment law update, sexual harassment, worker safety, CPR classes, environmental regulations and compliance, age crime prevention, supervisor training, annual industry wage and benefits survey, updated food safety guidelines, PACA, debt collection and bankruptcy, market access and exports, ag waivers, and conservation of agricultural lands.

Grower-Shipper's mission statement sums it up best: "We are the Central Coast's solution representing our members' agricultural needs." Whatever the issue, whatever the challenge, whatever the problem, the Association takes up the banner on behalf of its membership. To this end, and at every opportunity for over 75 years, GSA has expanded and improved upon its many services and programs to better serve the membership.

To me, however, the Association's greatest contribution to the industry can be summed up in one word: people. Grower-Shipper's strength is derived from a truly remarkable group of people -- the founders, members, officers, directors, and hard-working staff who have given so much to agriculture over the years. It is truly a legacy worth celebrating.

Many thanks are extended to my friend and colleague, Monterey County Agricultural Commissioner Eric Lauritzen and his office for recognizing and honoring the Grower-Shipper Association on its "Diamond Anniversary." I speak on behalf of our entire membership in expressing our sincere appreciation for the professional and productive working relationship GSA has enjoyed with the Monterey County Agricultural Commissioner's office these past 75 years, and look forward to that relationship continuing and thriving for many years to come.

James W. Bogart, President & General Counsel
www.gsva.org

MONTEREY COUNTY



AGRICULTURAL COMMISSIONER SEALER OF WEIGHTS & MEASURES

ERIC LAURITZEN AGRICULTURAL COMMISSIONER/SEALER

1428 ABBOTT STREET - SALINAS, CALIFORNIA 93901

PHONE: (831) 759-7325 FAX: (831) 422-5003

Website: www.co.monterey.ca.us/ag

A.G. Kawamura, Secretary
California Department of Food & Agriculture

and

The Honorable Board of Supervisors of Monterey County

Jerry Smith	4 th District, Chair
Fernando Armenta	1 st District
Louis Calcagno	2 nd District
W. B. "Butch" Lindley	3 rd District
Dave Potter	5 th District

It is a pleasure to present the 2005 annual Monterey County Crop Report, which is prepared pursuant to the provisions of Section 2279 of the California Food & Agriculture Code. This report reflects a production value of nearly \$3.3 billion for Monterey County, an increase of approximately 11% over 2004. The increase is attributable to higher values for leaf lettuce, strawberries, wine grapes, nursery products, spinach, spring mix and a variety of other vegetable crops and reflects the diversity of our agricultural industry. However, decreases were noted in other core commodities including broccoli and asparagus. While the overall production value reflects an increase over 2004, it is critical to note that the figures provided are ***gross values and do not represent or reflect net profit or losses experienced by individual growers.***

Monterey County continues to be a leader in agriculture, in both exports, shipping more than 580 million pounds of produce to more than 50 countries worldwide and diversity, with more than 40 crops exceeding \$1 million in production value.

The 2005 crop figures reveal a continuing trend toward consumer-ready packaging, resulting in increased consumption and production of commodities like leaf lettuces, especially Romaine, spinach and spring mix. Strawberry production was up nearly \$74 million on increased acreage, production and price. Wine grape production per acre was up significantly over 2004, resulting in an increase of \$80 million. Nursery products, celery, mushrooms and artichokes also posted increases in 2005. The County's organic segment increased slightly with a value of more than \$155 million on over 16,000 acres.

This report is our yearly opportunity to recognize the producers, growers and ranchers, along with all the other related businesses that contribute to Monterey County's economic engine. In our continuing effort to improve this report and to more accurately reflect the value of production at the grower level we made adjustments to some 2004 values to provide a fair comparison with the 2005 values that do not capture crop values associated with processing and packaging, as it has in some past years' reports. It is critical to thank the agricultural industry and others who generously provide assistance and vital information to complete this report. Without a very collaborative effort, compilation of this report would not be possible.

This year's report is dedicated to the Grower-Shipper Association of Central California who celebrated their 75th anniversary of service to the agricultural industry of Monterey County. I want to personally thank Jim Bogart for his contributions to this report. Special recognition for the production of this report goes to Richard Ordonez, Melissa Sells and all the staff who assisted in compiling this information and in improving the quality of the report.

Sincerely,

Eric Lauritzen
Agricultural Commissioner

**Monterey County
Agricultural Commissioner's Office**

1428 Abbott Street, Salinas, CA 93901
Phone: (831) 759-7325 Fax: (831) 422-5003
www.co.monterey.ca.us/ag

Staff

Agricultural Commissioner

Eric Lauritzen

Assistant Agricultural Commissioner

Robert Roach

Chief Deputy Agricultural Commissioner

Henry Gonzales

Deputy Agricultural Commissioners

Kenneth Allen, Teodulo Gonzalez, Estrella Guzman,
Patricia Murray, Richard Ordonez, Victor Pongo

Staff Biologist

Brad Oliver

Administration

Emmett Ashurst, Rosanne Rubino, Sheila Salazar,
Karen Stahlman

Administrative Services Staff

Juanita Adame, Luis Bonilla, Syble Beardslee,
Massiel Cruz-Avila, Pamela Everett, Marc Gomes,
Sandra Kilogan, Jenny Neuber, Daniel Sanchez, Melissa Sells,
Karla Tinajero, Elizabeth Tunstall

Agricultural Aides

Ronald Brown, Pamela Cope, Ingrid David, Maria Elias-Salazar,
Kurt Krieg, Sylvia Rodriguez, Larry Simon, Leslie Sutton,
Jose Vasquez

Agricultural Inspector/ Biologists

Jody Amaral, Abbie Asche, Kimberly Becker, Guillermo Bravo,
Cara Brents, Patrick Brodrick, Johnny Bunch, Jr.,
Nathanael Desjarlais, Diana Emmons, Yvette Hilber,
Paul Josselyn, Caitlin Lewis, Roger Little,
George Mosqueda, Jr., Steve Olmsted, Daniel Prakash,
Jesus Ramirez, Heather Sowersby, Becky White

Produce Inspectors

William Albright, Luz Cadena, Maria Cadena-Rice,
Celia Cervantes, Robert Corona, Danny Garcia,
Linda Gonzalez, Danny Mallobox, Jr., Danny Mallobox III,
Patrick McLaughlin, Manuel Mendoza,
Santa Angela Montiel-Lopez, Jose Pacheco, David Ramirez,
Gustavo Reyes, Terri Rush, Joe Torres, Gary Ura

Weights & Measures Inspectors

Daniel Marien, Glen Sakasegawa, Joseph Woodbury



Table of Contents

Article "Recognizing Grower Shipper Association for
75 Years of Service"

Agricultural Commissioner's Letter

Vegetable Crops	1-3
Fruit and Nut Crops	4
Seed & Apiary Production	5
Cut Flowers and Cut Foliage	6
Nursery Products.....	7
Livestock & Poultry.....	8
Field Production	9
Lettuce Production	10
Grape Production	11
Million Dollar Crops	12
Trends of Major Crops	13
Net Return to Grower.....	14
Gross Production Values.....	15
Agricultural Exports Trade Partners.....	16
Exports by Commodity	17
Head and Leaf Lettuce Seven Year Comparison.....	18
Summary of Sustainable Agricultural Activities	

Thanks to those who provided information for this year's crop statistics. Without your cooperation compiling accurate data would not have been possible. Enumeration and layout was a cooperative effort of the Agricultural Commissioner's Staff.

Special Thanks to **Grower Shipper Association** for their help in the production of this year's Crop Report.

To learn more about the Monterey County Agricultural Commissioner's Office visit our web site:

www.co.monterey.ca.us/ag/

VEGETABLE CROPS

CROP ¹	YEAR	ACREAGE	PRODUCTION		UNIT	VALUE	
			PER ACRE	TOTAL		PER UNIT	TOTAL ²
ANISE	2005	608	15.11	9,200	TON	\$545.20	\$5,013,000
	2004	534	14.22	7,600	TON	525.92	3,990,000
ARTICHOKES	2005	6,081	6.51	39,600	TON	1,380.45	54,674,000
	2004	6,183	5.38	33,000	TON	1,448.33	48,210,000
ASPARAGUS	2005	3,476	4.22	14,700	TON	1,580.17	23,159,000
	2004	4,968	3.27	16,300	TON	1,741.11	28,309,000
BOK CHOY	2005	393	14.80	5,800	TON	297.92	1,731,000
	2004	389	23.36	9,100	TON	280.74	2,548,000
BROCCOLI, Fresh	2005	38,863	6.68	259,600	TON	601.41	156,131,000
	2004	34,527	7.33	253,000	TON	685.62	173,612,000
Food Service ³	2005	N/A	N/A	68,900	TON	582.20	40,121,000
	2004*	N/A	N/A	58,000	TON	656.21	38,060,000
Processing ⁴	2005	N/A	N/A	39,200	TON	517.98	20,323,000
	2004*	N/A	N/A	43,700	TON	590.84	25,820,000
BROCCOLI Total	2005	48,922	N/A	N/A	TON	N/A	216,575,000
	2004	42,802	N/A	N/A	TON	N/A	237,492,000
CABBAGE, Fresh	2005	2,084	17.43	36,300	TON	366.13	13,291,000
	2004	1,569	14.40	22,600	TON	321.57	7,269,000
Food Service/Processing	2005	N/A	N/A	38,900	TON	310.60	12,070,000
	2004*	N/A	N/A	32,400	TON	290.80	9,422,000
CABBAGE Total	2005	5,314	N/A	N/A	TON	N/A	25,361,000
	2004	6,272	N/A	N/A	TON	N/A	16,108,000
CARROTS, Fresh	2005	1,419	22.21	31,500	TON	352.38	11,100,000
	2004	1,311	38.25	50,100	TON	220.66	11,062,000
Food Service	2005	N/A	N/A	17,200	TON	318.22	5,474,000
	2004*	N/A	N/A	14,200	TON	248.05	3,522,000
CARROTS, Total	2005	3,382	N/A	N/A	TON	N/A	16,574,000
	2004	2,989	N/A	N/A	TON	N/A	14,584,000
CAULIFLOWER, Fresh	2005	15,025	8.60	129,200	TON	654.65	84,557,000
	2004	13,165	9.77	129,000	TON	698.95	89,931,000
Food Service/Processing	2005	N/A	N/A	17,800	TON	496.47	8,829,000
	2004*	N/A	N/A	5,600	TON	530.07	2,986,000
CAULIFLOWER Total	2005	17,380	N/A	N/A	TON	N/A	93,386,000
	2004	14,520	N/A	N/A	TON	N/A	92,899,000
CELERY, Fresh	2005	7,957	41.37	329,200	TON	292.95	96,433,000
	2004	7,331	38.44	282,000	TON	314.03	88,497,000
Food Service	2005	N/A	N/A	35,300	TON	218.23	7,702,000
	2004*	N/A	N/A	20,900	TON	232.78	4,865,000

¹ Organic figures included in totals

² Totals may not calculate due to rounding

* Adjusted figures

³ "Food Service" commodities are destined to be sold to restaurants and foodservice companies for the preparation of meals eaten away from home, sold in larger packages

⁴ "Processing" commodities are destined to be processed in a way that substantially alters the raw nature of the product such as freezing, drying or cooking, and does not necessarily include processes such as washing, slicing or chopping.

VEGETABLE CROPS

CROP	YEAR	ACREAGE	PRODUCTION		UNIT	VALUE	
			PER ACRE	TOTAL		PER UNIT	TOTAL
CELERY, Total	2005	9,965	N/A	N/A	TON	N/A	\$104,144,000
	2004	9,504	N/A	N/A	TON	N/A	93,362,000
CHARD	2005	655	8.32	5,500	TON	841.91	4,593,000
	2004	625	6.60	4,100	TON	791.16	3,260,000
CILANTRO	2005	782	8.85	6,900	TON	782.11	5,412,000
	2004	776	9.26	7,200	TON	810.67	5,828,000
HERBS ¹	2005	101	6.00	600	TON	1,450.00	879,000
	2004	94	8.25	771	TON	1,792.00	1,387,000
KALE	2005	2,002	10.72	21,500	TON	742.54	15,936,000
	2004	1,360	10.90	14,800	TON	790.35	11,717,000
LEEKs	2005	251	11.99	3,000	TON	1,372.82	4,126,000
	2004	266	12.18	3,200	TON	1,397.45	4,524,000
LETTUCE, Total ²	2005	216,171	N/A	N/A	CTN	N/A	912,621,000
	2004	206,500	N/A	N/A	CTN	N/A	718,837,000
MISC. VEGETABLES, Fresh	2005	3,591	5.18	18,600	TON	1,099.94	20,472,000
	2004 ³	3,755	4.90	18,400	TON	1,005.97	18,519,000
Food Service	2005	N/A	N/A	109,100	TON	596.82	65,097,000
	2004*	N/A	N/A	94,600	TON	614.51	58,133,000
Processing	2005	N/A	N/A	52,500	TON	369.63	19,389,000
	2004	N/A	N/A	51,000	TON	283.08	14,458,000
MISC. VEGETABLES, Total ⁴	2005	19,828	N/A	N/A	TON	N/A	104,958,000
	2004*	18,390	N/A	N/A	TON	N/A	91,110,000
MUSHROOMS	2005	157	N/A	45,766,000	LBS	1.44	65,983,000
	2004	158	N/A	47,148,000	LBS	1.27	59,981,000
NAPA	2005	650	28.33	18,400	TON	306.52	5,644,000
	2004	587	23.83	14,000	TON	291.75	4,081,000
ONIONS, Dry	2005	1,890	25.50	48,200	TON	246.02	11,858,000
	2004	1,740	24.13	42,000	TON	121.98	5,121,000
ONIONS, Green	2005	1,420	12.34	17,500	TON	1,086.61	19,016,000
	2004	1,229	12.58	15,500	TON	1,057.74	16,349,000
PARSLEY	2005	439	14.79	6,500	TON	726.56	4,719,000
	2004	447	15.90	7,100	TON	737.79	5,243,000
PEAS ⁵	2005	1,578	N/A	N/A	TON	N/A	25,514,000
	2004	1,125	N/A	N/A	TON	N/A	14,381,000
PEPPERS ⁶	2005	964	21.37	20,600	TON	383.96	7,921,000
	2004	952	21.01	20,000	TON	339.54	6,788,000
RADICCHIO	2005	2,156	3.76	8,100	TON	1,241.45	10,067,000
	2004	2,074	3.49	7,200	TON	1,308.56	9,476,000

¹ Includes: Basil, Chervil, Dill, Ginkgo, Marjoram, Oregano, Rosemary, Sage and Thyme

² See Lettuce Production for detail information, Page 11

³ Corrected figures

⁴ Includes Argula, Beans, Beets, Broccolini, Brussel Sprouts, Cactus Pears, Cardone, Chicory, Chives, Collard Greens, Corn, Cucumbers, Daikon, Dandelion Greens, Edible Flowers, Fava Beans, Fennel, Frisee, Garlic, Gourds, Kohlrabi, Mache, Mustard, Parsnips, Pumpkins and Turnips

⁵ Includes Food Service and Processing

⁶ Includes Processed Pimentos, Chili and Bell Peppers

*Adjusted figures

VEGETABLE CROPS

CROP	YEAR	PRODUCTION		TOTAL	UNIT	VALUE	
		ACREAGE	PER ACRE			PER UNIT	TOTAL
RADISH	2005	186	14.96	2,800	TON	\$496.63	\$1,380,000
	2004	200	22.02	4,400	TON	426.75	1,882,000
RAPPINI	2005	3,612	3.41	12,000	TON	1,233.43	15,199,000
	2004	2,988	3.07	9,100	TON	1,306.31	11,966,000
SALAD PRODUCTS ¹	2005	N/A	N/A	309,100	TON	427.99	132,277,000
	2004*	N/A	N/A	423,000	TON	673.07	284,709,000
SPINACH, Fresh	2005	10,451	11.34	118,500	TON	982.73	116,491,000
	2004	9,951	10.82	107,700	TON	892.78	96,152,000
Food Service	2005	N/A	N/A	28,000	TON	836.61	23,425,000
	2004*	N/A	N/A	26,334	TON	750.47	19,763,000
Value Added ²	2005	N/A	N/A	56,900	TON	849.00	48,308,000
	2004*	N/A	N/A	53,466	TON	759.42	40,603,000
SPINACH, Total	2005	16,937	N/A	N/A	TON	N/A	188,224,000
	2004	14,115	N/A	N/A	TON	N/A	156,518,000
SPRING MIX	2005	13,079	8.64	113,000	TON	1,454.78	164,462,000
	2004	12,207	7.82	95,500	TON	1,476.51	140,975,000
SQUASH	2005	325	11.21	3,600	TON	666.96	2,432,000
	2004	349	10.72	3,700	TON	443.59	1,661,000
TOMATOES	2005	505	18.02	9,100	TON	619.89	5,636,000
	2004	431	20.60	8,900	TON	635.28	5,635,000



VEGETABLE CROPS	2005	285,351	VEGETABLE CROPS	\$2,249,474,000
TOTAL ACRES	2004	285,868	TOTAL VALUE	\$2,098,931,000

¹ A number of commodities were extracted and distributed accordingly in 2005.

² "Value Added" commodities are destined to be sold to consumers to prepare meals at home, and are sold in smaller packages with consumer labeling. Figures reflect only FOB value of commodity.

FRUIT AND NUT CROPS

CROP	YEAR	ACREAGE	PRODUCTION		UNIT	VALUE	
			PER ACRE	TOTAL		PER UNIT	TOTAL
AVOCADOS	2005	175	1.97	346	TON	\$2,330.85	\$805,000
	2004	134	2.05	275	TON	1,610.45	442,000
CITRUS	2005	1,169	24.62	28,800	TON	311.47	8,962,000
	2004	1,114	16.43	18,300	TON	452.61	8,284,000
GRAPES ¹	2005	38,179	7.09	269,000	TON	948.09	254,615,000
	2004	38,614	4.46	172,000	TON	1,013.35	174,380,000
RASPBERRIES	2005	621	11.30	7,000	TON	3,793.91	26,612,000
	2004	643	11.58	7,400	TON	3,473.76	25,851,000
STRAWBERRIES	2005	9,294	29.75	276,500	TON	1,395.00	385,731,000
	2004	8,807	25.91	228,000	TON	1,363.33	311,098,000
Processing	2005	N/A	N/A	14,900	TON	346.44	5,166,000
	2004	N/A	N/A	14,400	TON	415.95	5,974,000
STRAWBERRIES, Total	2005	9,294	N/A	291,400	TON	N/A	390,898,000
	2004	8,807	N/A	243,000	TON	N/A	317,072,000
WALNUTS	2005	188	1.47	276	TON	1,450.00	400,000
	2004*	180	1.64	295	TON	1,450.00	428,000
MISC. FRUIT ²	2005	205	11.94	2,500	TON	1,330.95	3,261,000
	2004	78	12.35	963	TON	2,682.88	2,584,000



FRUIT AND NUT CROPS	2005	49,831	FRUIT AND NUT CROPS	\$685,553,000
TOTAL ACRES ³	2004	49,570	TOTAL VALUE	\$529,041,000

¹ Represents Bearing Acres Only; See Grape Production for detail information Page 11

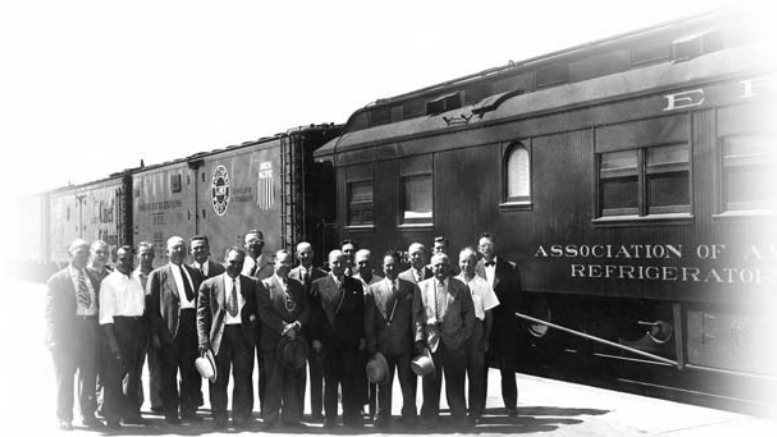
² Includes: Apples, Blackberries, Blueberries, Brambleberries, Kiwi and Olives

³ Totals may not calculate due to reorganization of crops; Corrected figures

* Adjusted figures

SEED PRODUCTION

CROP	YEAR	ACREAGE	PRODUCTION		UNIT	VALUE	
			PER ACRE	TOTAL		PER UNIT	TOTAL
BEAN SEED, All	2005	2,751	1.01	2,800	TON	\$1,143.76	\$3,169,000
	2004	2,617	0.75	2,000	TON	1,565.01	3,066,000
MISC. SEED ¹	2005	2,089	2.14	4,500	TON	644.67	2,880,000
	2004 ²	2,403	1.89	4,500	TON	871.17	3,956,000
SEED CROPS	2005	4,840			SEED CROPS		\$6,049,000
TOTAL ACRES	2004	5,020			TOTAL VALUE		\$7,022,000



APIARY PRODUCTION

CROP	YEAR	COLONIES	PRODUCTION	UNIT	VALUE	
					PER UNIT	TOTAL
HONEY	2005	N/A	23,000	LBS	\$0.90	\$20,700
	2004	N/A	14,200	LBS	1.10	15,600
POLLINATION ³	2005	320	N/A	COLONY	37.50	12,000
	2004	650	N/A	COLONY	47.50	30,900
WAX	2005	N/A	1,000	LBS	1.35	1,400
	2004	N/A	750	LBS	1.78	1,300
APIARY TOTAL	2005	320	24,000			\$34,100
	2004	650	14,900			\$47,800

¹ Includes: Barley, Broccoli, Cauliflower, Kale and Pea Seed

² Corrected Figures

³ Crops Pollinated: Apple, Broccoli, Carrot, Cauliflower, Kale, Melon, Onion, Parsley, Pepper, Spinach and Squash (seed).

CUT FLOWERS AND CUT FOLIAGE

CROP	YEAR	ACREAGE	PRODUCTION		VALUE	
			QUANTITY SOLD	UNIT	PER UNIT	TOTAL
ALSTROEMERIA	2005	15.10	239,400	PER BUNCH	\$1.71	\$409,000
	2004	15.00	237,800	PER BUNCH	1.05	251,000
ASIATIC LILLY*	2005	4.54	194,000	PER BUNCH	4.12	797,000
CARNATIONS	2005	15.71	7,443,000	PER BLOOM	0.14	1,062,000
	2004 ¹	28.00	23,308,000	PER BLOOM	0.19	4,526,000
CHRYSANTHEMUMS	2005	28.61	2,220,000	PER BLOOM	0.76	1,687,000
	2004	56.00	2,833,000	PER BLOOM	0.74	2,082,000
EUCALYPTUS	2005	98.27	925,000	PER BUNCH	1.31	1,209,000
	2004	87.00	937,000	PER BUNCH	2.84	2,665,000
GERBERA*	2005	16.03	8,042,000	PER BLOOM	0.30	2,375,000
IRIS	2005	19.08	352,000	PER BUNCH	2.03	713,000
	2004	18.00	344,000	PER BUNCH	1.95	671,000
MINIATURE CARNATIONS	2005	7.62	272,000	PER BUNCH	1.63	442,000
MISC. CUT FLOWERS AND CUT FOLIAGE ²	2005	314.25	15,600,000	VARIOUS	2.78	43,439,000
	2004	296.00	35,949,000	VARIOUS	1.07	38,489,000
ORIENTAL LILLIES*	2005	6.21	215,000	PER BUNCH	9.35	2,008,000
ROSES ³	2005	31.34	11,916,000	PER BLOOM	0.33	3,926,000
	2004	86.00	29,528,000	PER BLOOM	0.29	8,473,000
SNAPDRAGON	2005	16.84	584,000	PER BUNCH	2.80	1,637,000
	2004	16.00	639,000	PER BUNCH	2.81	1,795,000
TULIPS*	2005	3.06	89,600	PER BUNCH	3.42	306,000
CUT FLOWERS AND CUT FOLIAGE	2005	577		VARIOUS		\$60,012,000
TOTAL ACRES ⁴	2004	618		VARIOUS		\$59,212,000

¹ Figures include Miniature Carnations for 2004

² Includes, Amaranthus, Amaryllis, Asters, Bells of Ireland, Calla Lilly, Campanula, Celosia, Chocolate Cosmos, Craspedia, Crocosmia, Curly Willow, Dahlias, Delphinium, Ferns, Freesia, Gardenia, Gipsy, Gladiolus, Godetia, Gomphena, Gypsophila, Heather, Hydrangea, Kale, Kangaroo Paw, Larkspur, Lavendar, Liaris, Lisianthus, Lovelia, Lupine, Marigold, Montbretia, Narcissus, Protea, Ranunculus, Rudbeckia, Safflower, Sapnoaria, Smilax, Statice, Stephanotis, Stock, Strawflower, Sunflower, Sweet Peas, Triloma Flamenco, Tuberose and Tweedia

³ Combined figures for Miniature Roses and Standard Roses

⁴ Totals may not calculate due to reorganization of crops

*New Category

NURSERY PRODUCTS

CROP	YEAR	ACREAGE	PRODUCTION	UNIT	VALUE	
			QUANTITY SOLD		PER UNIT	TOTAL
BEDDING PLANTS*	2005	222.50	42,788,000	PER PLANT	\$0.53	\$22,541,000
FRUIT & NUT TREES*	2005	4.00	291,000	PER PLANT	2.91	848,000
MISC. NURSERY PRODUCTS ¹	2005	367.24	2,030,000	VARIOUS	4.06	8,236,000
	2004	904.00	39,418,000	VARIOUS	1.25	49,385,000
ORCHIDS	2005	91.97	11,191,000	PER PLANT	7.18	80,339,000
	2004	53.00	8,838,000	PER PLANT	7.12	62,928,000
POINSETTIA	2005	38.00	864,000	PER PLANT	5.96	5,155,000
	2004	50.00	2,382,000	PER PLANT	3.57	8,512,000
POTTED PLANTS*	2005	272.73	20,708,000	PER PLANT	2.66	55,183,000
PROPAGATIVE MATERIALS	2005	12.54	5,203,000	PER PLANT	0.29	1,483,000
	2004	141.00	26,682,000	PER PLANT	1.08	28,708,000
VEGETABLE TRANSPLANTS ²	2005	104.90	2,099,900,000	PER PLANT	0.02	42,177,000
	2004 ³	100.00	2,024,496,000	PER PLANT	0.02	40,450,000
WOODY ORNAMENTALS	2005	8.80	25,500	PER PLANT	10.25	261,000
	2004	30.00	1,466,000	PER PLANT	6.10	8,949,000
NURSERY PRODUCTS	2005	1,123		NURSERY PRODUCTS		216,223,000
TOTAL ACRES	2004 ⁴	1,291		NURSERY PRODUCTS		201,991,000



OVERALL NURSERY	2005	1,699	OVERALL NURSERY	\$276,235,000
TOTAL ACRES	2004 ⁵	1,909	TOTAL VALUE	\$261,203,000

¹ Includes: Christmas Trees, Clivia, Native Plants, Turf and Water Pond Plants

² Crop category previously reported as commercial/organic vegetables

³ Corrected Figures

⁴ Corrected Figures

⁵ Corrected Figures

LIVESTOCK & POULTRY

CROP	YEAR	HEAD	PRODUCTION	UNIT	VALUE	
					PER UNIT	TOTAL
CATTLE & CALVES	2005	47,500	298,000	CWT	\$71.00	\$21,213,000
	2004	47,500	298,000	CWT	69.00	20,610,000
STOCKER	2005	50,000	104,000	CWT	91.00	9,500,000
	2004	50,000	116,000	CWT	89.00	10,324,000
SHEEP & LAMBS	2005	2,500	3,750	CWT	91.00	368,000
	2004	2,500	3,750	CWT	90.00	338,000
DAIRY COWS	2005	1,400	N/A	HEAD	2,000.00	2,800,000
	2004	1,160	N/A	HEAD	2,000.00	2,320,000
CULL COWS	2005	241	N/A	HEAD	650.00	157,000
	2004	250	N/A	HEAD	800.00	200,000
CALVES	2005	200	N/A	HEAD	80.00	16,000
	2004	137	N/A	HEAD	70.00	9,600
HOGS	2005	1,600	304,000	LBS	0.51	155,000
	2004	1,600	304,000	LBS	0.50	152,000
MILK, MARKET	2005	N/A	295,000	CWT	14.41	4,256,000
	2004	N/A	339,000	CWT	15.11	5,120,000
WOOL	2005	N/A	18,000	LBS	0.40	7,200
	2004	N/A	18,000	LBS	0.40	7,200
MISC. POULTRY PRODUCTS ¹	2005					1,717,000
	2004 ²					1,030,000



LIVESTOCK & POULTRY	2005					\$40,189,000
TOTAL	2004					\$40,111,000

¹ Includes Fertilizer, Poultry, Eggs, Milk Manufacturing and Hatcheries

² Corrected Figure

FIELD CROPS

CROP	YEAR	ACREAGE	PRODUCTION		UNIT	VALUE	
			PER ACRE	TOTAL		PER UNIT	TOTAL
BARLEY, Grain	2005	12,160	1.03	12,600	TON	\$90.98	\$1,142,000
	2004	10,064	0.86	8,600	TON	106.40	917,000
BEANS ¹	2005	1,200	1.78	2,100	TON	1,028.07	2,190,000
	2004	1,832	1.30	2,400	TON	1,194.94	2,848,000
HAY, Alfalfa	2005	970	1.75	1,700	TON	125.49	213,000
	2004	1,428	1.67	2,400	TON	129.38	308,000
MISC. FIELD CROPS ²	2005	2,646	1.02	2,700	TON	102.57	276,000
OATS ³	2005	3,910	2.11	8,300	TON	118.00	974,000
	2004	4,300	2.03	8,700	TON	85.22	742,000
WHEAT, Grain	2005	805	0.94	757	TON	109.06	82,600
	2004	910	0.93	843	TON	111.07	93,600
RANGELAND ⁴	2005	1,191,000	N/A	N/A	ACRE	8.90	10,600,000
	2004	1,191,733	N/A	N/A	ACRE	8.90	10,606,000



FIELD CROPS	2005	1,212,691	FIELD CROPS	\$15,477,000
TOTAL ACRES	2004	1,210,267	TOTAL VALUE	\$15,515,000

¹ Includes: Pintos, Pink, Pinquito, Garbanzo and Lima Beans

² New Category: includes Safflower and Pasture

³ Includes: Hay Oats and Misc. Oats

⁴ Previously reported as Pasture, Dry Land

LETTUCE PRODUCTION ~ DETAIL

CROP	YEAR	ACREAGE	PRODUCTION		UNIT	VALUE	TOTAL**
			PER ACRE	TOTAL		PER UNIT	
HEAD LETTUCE							
SPRING	2005	21,459					
	2004	22,611					
SUMMER	2005	19,855					
	2004	21,235					
FALL	2005	23,142					
	2004	24,840					
NAKED PACK	2005	N/A	N/A	9,155,000	CTN	\$6.73	\$61,614,000
	2004	N/A	N/A	9,983,000	CTN	6.56	65,488,000
WRAPPED PACK	2005	N/A	N/A	23,276,000	CTN	7.93	184,579,000
	2004	N/A	N/A	22,195,000	CTN	8.10	179,781,000
BULK FOR SHREDDING	2005	N/A	N/A	19,385,000	CTN	3.39	65,620,000
	2004	N/A	N/A	23,241,000	CTN	2.69	62,554,000
HEAD LETTUCE TOTAL	2005	64,456	804	51,816,000	CTN	6.02	311,813,000
	2004 ¹	68,686	806	55,419,000	CTN	7.33	307,823,000
LEAF LETTUCE							
BUTTER LEAF LETTUCE	2005	1,964	1,088	2,138,000	CTN	6.99	14,947,000
	2004	1,816	1,097	1,994,000	CTN	7.04	14,028,000
ENDIVE	2005	695	1,242	863,000	CTN	7.52	6,491,000
	2004	728	1,823	1,328,000	CTN	6.21	8,242,000
ESCAROLE	2005	283	988	280,000	CTN	6.18	1,730,000
	2004	272	1,007	274,000	CTN	6.24	1,706,000
GREEN LEAF LETTUCE	2005	11,184	795	8,900,000	CTN	7.21	64,159,000
	2004	10,413	838	8,733,000	CTN	7.24	63,217,000
RED LEAF LETTUCE	2005	4,256	1,033	4,399,000	CTN	6.80	29,927,000
	2004	4,238	1,036	4,390,000	CTN	6.87	30,154,000
ROMAINE LETTUCE	2005	30,174	1,412	42,633,000	CTN	7.08	301,864,000
	2004*	27,767	1,517	58,152,000	CTN	5.05	293,667,000
LEAF LETTUCE Food Service ²	2005	N/A	N/A	232,625	TON	255.60	59,459,000
LEAF LETTUCE Value Added ³	2005	N/A	N/A	472,300	TON	258.50	122,231,000
LEAF LETTUCE TOTAL	2005	103,159	1,152	87,410,000	CTN	6.87	600,808,000
	2004*	92,580	1,086	74,871,000	CTN	5.49	411,014,000*
LETTUCE CROP TOTALS	2005	216,171		139,226,000	CTN		\$912,621,000
	2004*	206,500		130,289,000	CTN		718,837,000*

¹ Corrected Total for 2004

² New Category is Leaf Lettuce Food Service

³ New Category is Leaf Lettuce Value Added

*Adjusted figures

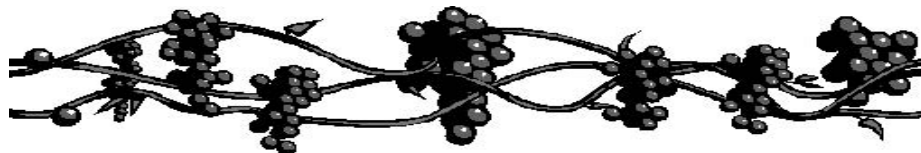
**Totals may not calculate due to reorganization of crops

GRAPE PRODUCTION

CROP	YEAR	ACREAGE	PRODUCTION		UNIT	VALUE	
			PER ACRE	TOTAL		PER UNIT	TOTAL
BEARING ACRES	2005	38,179	7.03	269,000	TON	\$948.09	\$254,615,000
BEARING ACRES	2004	38,614	4.46	172,000	TON	1,013.35	174,380,000
NON BEARING/NOT HARVESTED	2005	1,531					
NON BEARING/NOT HARVESTED	2004	1,036					
TOTAL GRAPE ACRES	2005	39,710					
TOTAL GRAPE ACRES	2004	39,650					

TOTAL ACREAGE OF WHITE & RED GRAPES BY VARIETY

White Grape Varieties	Harvested Acres	Average Price Per Ton	Total Tons	Total Value
Chardonnay	16,397	\$846	130,000	\$109,734,000
Chenin Blanc	432	\$334	3,400	\$1,135,000
Gewurztraminer	563	\$869	4,900	\$4,275,000
Malvasia Bianca	74	\$1,019	291	\$296,000
Muscat Canelli	112	\$1,320	1,360	\$1,795,000
Muscat Orange	19	\$1,503	53	\$80,000
Other Whites ¹	101	\$575	515	\$296,000
Pinot Blanc	139	\$749	496	\$371,000
Pinot Grigio/Pinot Gris	808	\$1,131	5,193	\$5,873,000
Riesling	932	\$1,000	5,920	\$5,916,000
Roussanne	16	\$1,600	62	\$99,000
Sauvignon Blanc	1,011	\$997	8,400	\$8,374,000
Semillon	55	\$975	348	\$339,000
Viognier	132	\$1,476	671	\$991,000



Red Grape Varieties	Harvested Acres	Average Price Per Ton	Total Tons	Total Value
Cabernet Franc	376	\$753	3,065	\$2,307,000
Cabernet Sauvignon	4,147	\$988	25,300	\$25,028,000
Charbono	188	\$1,000	2,050	\$2,045,000
Malbec	120	\$1,547	627	\$970,000
Merlot	5,820	\$1,032	37,800	\$39,016,000
Mourvedre	3	\$1,828	10	\$18,000
Other Reds ²	165	\$980	1,080	\$1,058,000
Petit Verdot	143	\$952	747	\$711,000
Petite Sirah	223	\$885	1,180	\$1,044,000
Pinot Noir	4,251	\$1,370	23,700	\$32,502,000
Zinfandel	246	\$648	1,460	\$945,000
Sangiovese	124	\$831	512	\$425,000
Syrah/Shiraz	1,583	\$926	9,690	\$8,972,000

¹ Albarino, French Colombard, Loureiro, Muscat Giallo, Muscat Hamburg, Pigato, Trexidaura, Marsanne, Grenache and Grenache Blanc

² Aleatico, Alicante Bouschet, Barbera, Carignane, Cinsaut, Dolcetto, Freisa, Gamay (Napa)/Valdigue, Nebbiolo, Souzao, Tannat and Tempranillo

MONTEREY COUNTY'S MILLION DOLLAR CROPS

2005 CROP RANKING	CROPS	2005 VALUE
1	LEAF LETTUCE	\$600,808,000
2	STRAWBERRIES	\$390,898,000
3	HEAD LETTUCE	\$311,813,000
4	NURSERY	\$276,235,000
5	GRAPES	\$254,615,000
6	BROCCOLI	\$216,575,000
7	SPINACH	\$188,224,000
8	SPRING MIX	\$164,462,000
9	SALAD PRODUCTS	\$132,277,000
10	MISC. VEGETABLES	\$104,958,000
11	CELERY	\$104,144,000
12	CAULIFLOWER	\$93,386,000
13	MUSHROOM	\$65,983,000
14	ARTICHOKES	\$54,674,000
15	BEEF CATTLE	\$30,713,000
16	RASPBERRIES	\$26,612,000
17	PEAS	\$25,514,000
18	CABBAGE	\$25,361,000
19	ASPARAGUS	\$23,159,000
20	GREEN ONIONS	\$19,016,000
21	CARROTS	\$16,574,000
22	KALE	\$15,936,000
23	RAPPINI	\$15,199,000
24	DRY ONIONS	\$11,858,000
25	RANGELAND	\$10,600,000
26	RADICCHIO	\$10,067,000
27	CITRUS	\$8,962,000
28	PEPPERS	\$7,921,000
29	DAIRY	\$7,229,000
30	SEEDS	\$6,049,000
31	NAPA	\$5,644,000
32	TOMATOES	\$5,636,000
33	CILANTRO	\$5,412,000
34	ANISE	\$5,013,000
35	PARSLEY	\$4,719,000
36	CHARD	\$4,593,000
37	LEEKs	\$4,126,000
38	MISC. FRUITS	\$3,261,000
39	SQUASH	\$2,432,000
40	BEANS	\$2,190,000
41	BOK CHOY	\$1,731,000
42	MISC. POULTRY	\$1,717,000
43	RADISH	\$1,380,000
44	BARLEY, GRAIN	\$1,142,000

SUMMARY OF CROP CATEGORIES	2004 TOTAL VALUE	2005 TOTAL VALUE
VEGETABLE CROPS	\$2,098,931,000	\$2,249,474,000
FRUITS & NUTS	\$529,041,000	\$685,553,000
NURSERY CROPS	\$261,203,000	\$276,235,000
LIVESTOCK & POULTRY	\$40,111,000	\$40,189,000
FIELD CROPS	\$15,515,000	\$15,477,000
SEED CROPS	\$7,022,000	\$6,049,000
APIARY	\$47,800	\$34,100
TOTAL OF CROP CATEGORIES	\$2,951,870,800	\$3,273,011,100

TRENDS OF MAJOR CROPS IN MONTEREY COUNTY

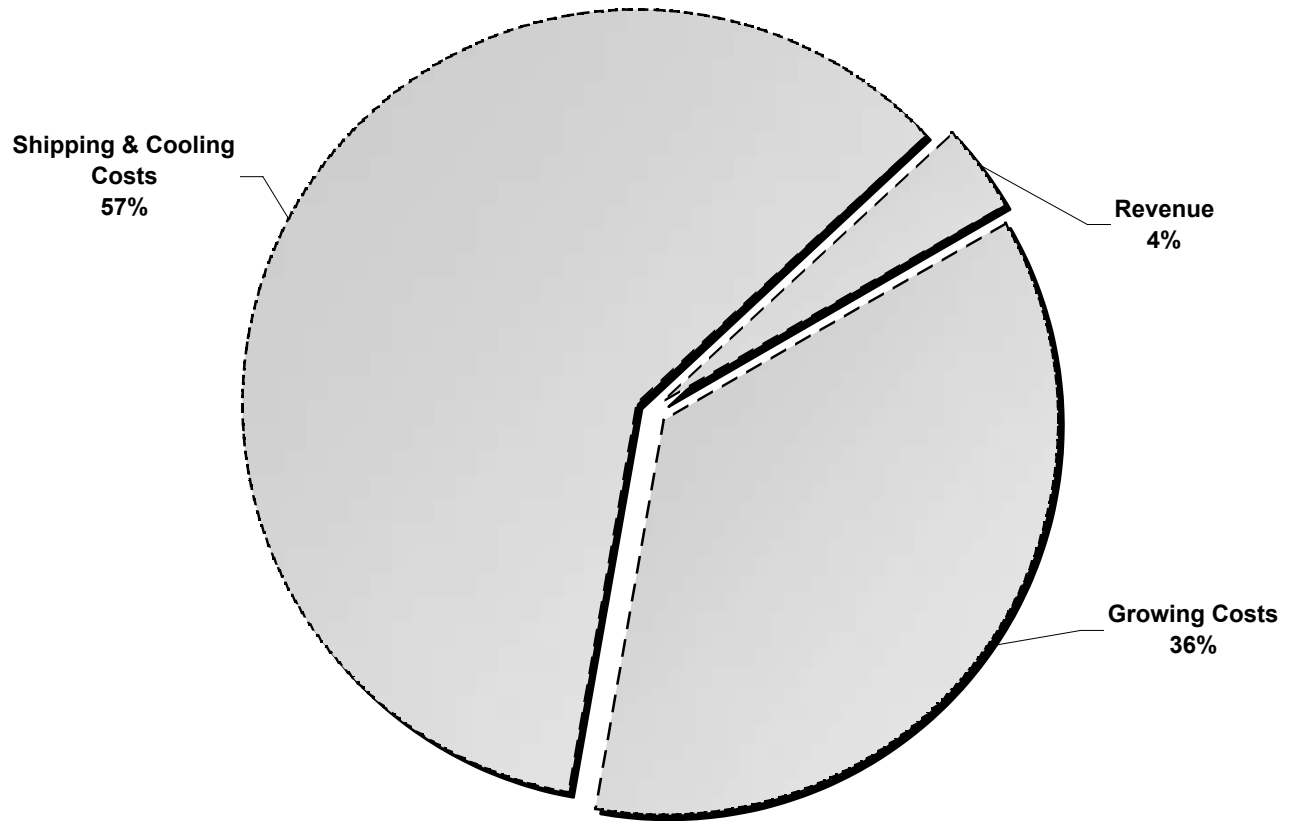
CROP		YEAR		
		1985	1995	2005
ARTICHOKES	ACRE VALUE CPI ADJUSTED \$ ¹	9,187	6,344	6,081
		30,555,000	37,655,000	54,674,000
		55,454,000	48,288,000	54,674,000
BROCCOLI	ACRE VALUE CPI ADJUSTED \$	54,805	61,447	38,863
		129,332,000	264,396,000	216,575,000
		234,722,000	338,969,000	216,575,000
CAULIFLOWER	ACRE VALUE CPI ADJUSTED \$	22,415	23,569	16,380
		62,239,000	125,000,000	93,386,000
		112,956,000	160,256,000	93,386,000
CELERY	ACRE VALUE CPI ADJUSTED \$	5,410	7,445	10,138
		39,380,000	73,309,000	104,144,000
		71,470,000	93,986,000	104,144,000
GRAPES ²	ACRE VALUE CPI ADJUSTED \$	28,647	30,483	38,179
		38,321,000	79,309,000	254,615,000
		69,548,000	101,678,000	254,615,000
HEAD LETTUCE	ACRE VALUE CPI ADJUSTED \$	62,640	71,770	64,456
		243,357,000	481,593,000	311,813,000
		441,664,000	617,427,000	311,813,000
LEAF LETTUCE	ACRE VALUE CPI ADJUSTED \$	7,737	33,822	103,159
		28,494,000	184,393,000	600,808,000
		51,713,000	236,401,000	600,808,000
MUSHROOMS	ACRE VALUE CPI ADJUSTED \$	N/A	N/A	N/A
		38,432,000	51,541,000	65,983,000
		69,750,000	66,078,000	65,983,000
NURSERY PRODUCTS	ACRE VALUE CPI ADJUSTED \$	967	1,575	1,699
		77,687,000	111,199,000	276,235,000
		140,988,000	142,563,000	276,235,000
SPINACH	ACRE VALUE CPI ADJUSTED \$	3,046	8,700	16,937
		5,278,000	43,721,000	188,224,000
		9,579,000	56,053,000	188,224,000
STRAWBERRIES	ACRE VALUE CPI ADJUSTED \$	3,500	7,022	9,294
		93,619,000	192,714,000	390,898,000
		169,907,000	247,069,000	390,898,000

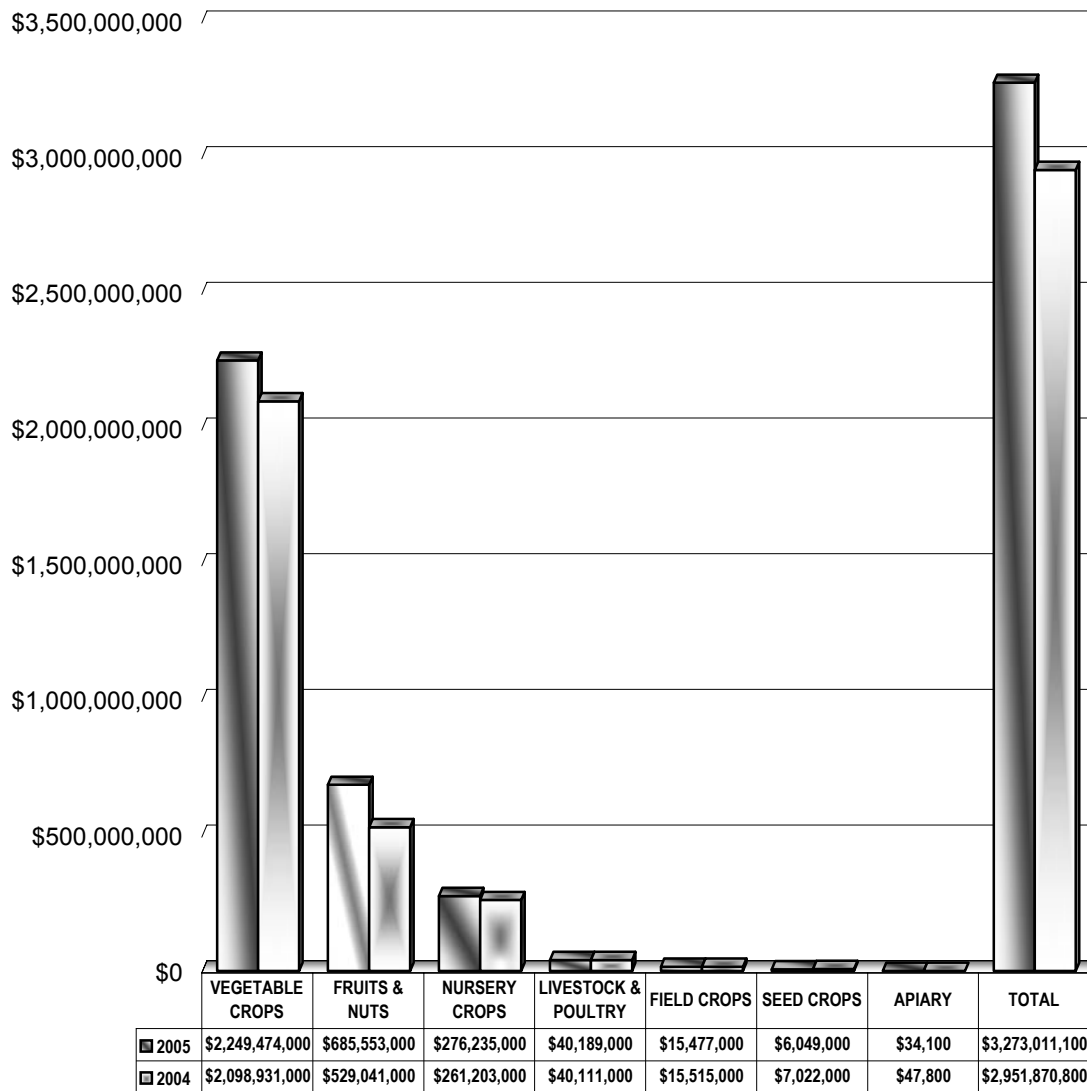
TOTAL	ACRE VALUE CPI ADJUSTED \$	198,354	252,177	305,186
		\$786,694,000	\$1,644,776,000	\$2,557,355,000
		\$1,427,751,000	\$2,108,769,000	\$2,557,355,000

¹ Consumer Price Index Conversion Factors from http://oregonstate.edu/Dept/pol_sci/fac/sahr/cv2004x.pdf

² Represents Bearing Acres Only

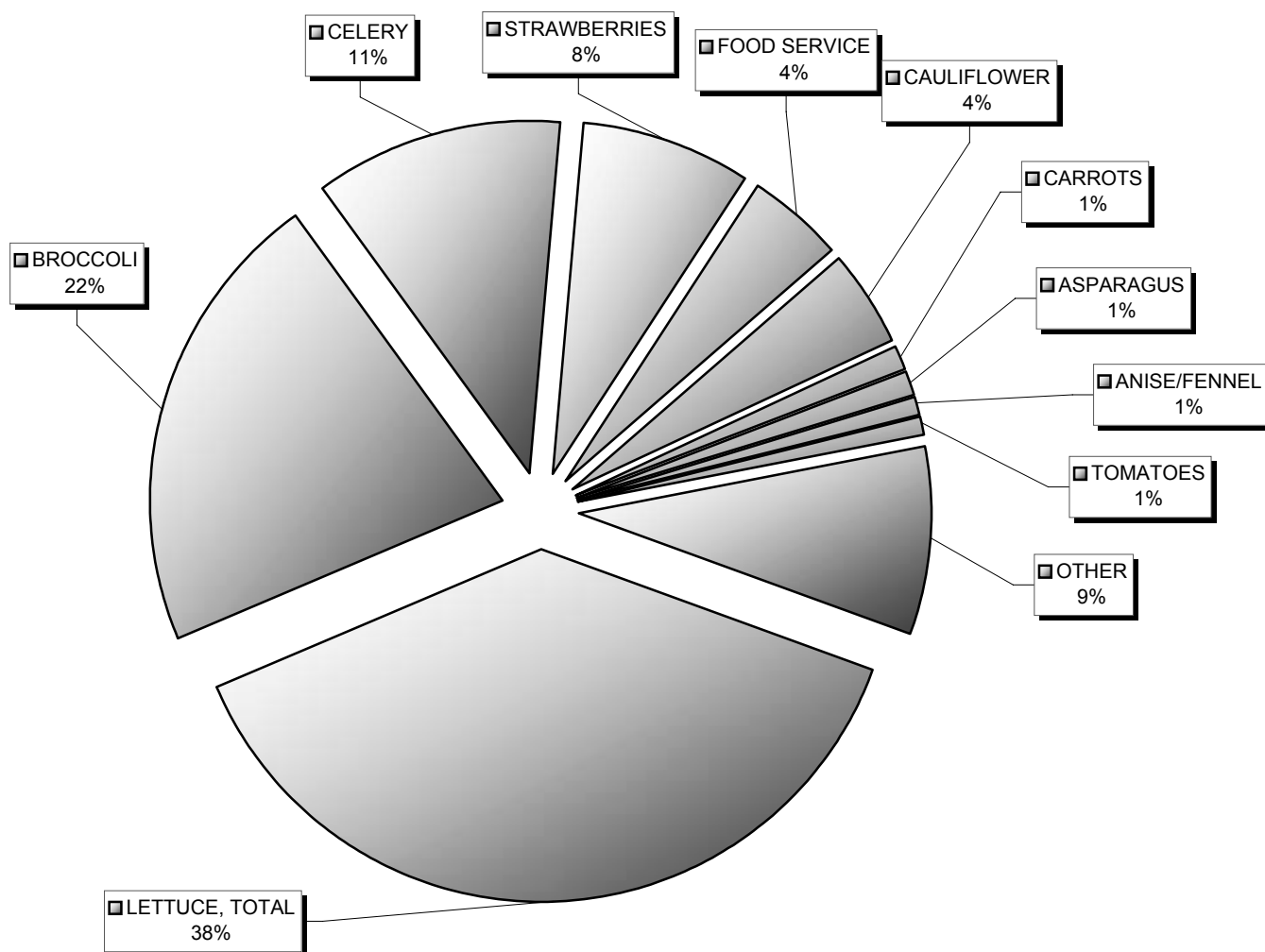
MONTEREY COUNTY'S NET RETURN TO GROWER





MONTEREY COUNTY'S AGRICULTURAL EXPORTS TRADE PARTNERS

Country	2005 Total Lbs.	2004 Total Lbs.
Australia	817,774	1,494,966
Canada	301,209,086	281,407,854
Chile	1,080	0
EUN	2,898,657	3,368,685
French Polynesia	56,552	82,944
Guam	310,279	642,744
Guatemala	46,421	0
Hong Kong	13,783,474	16,533,472
Indonesia	8,056	1,559,755
Jamaica	14,928	27,796
Japan	90,983,242	104,702,673
Kuwait	2,559,296	3,826,652
Malaysia	1,265,148	1,100,760
Mexico	38,685,051	35,155,551
New Zealand	418,076	443,944
Nicaragua	390,000	0
Northern Mariana	38,169	824,546
Norway	75,000	31,225
Panama	198,426	591,285
Philippines	50,032	25,548
Puerto Rico	6,123,316	6,556,396
Republic of China	1,773,071	282,566
Republic of Korea	1,158,526	3,446,541
Saudi Arabia	214,920	0
Singapore	15,170,977	10,882,154
Taiwan	74,030,768	55,620,932
Trinidad & Tobago	0	68,794
United Arab Emirates	528,318	1,310,000
Vietnam	1,296	0



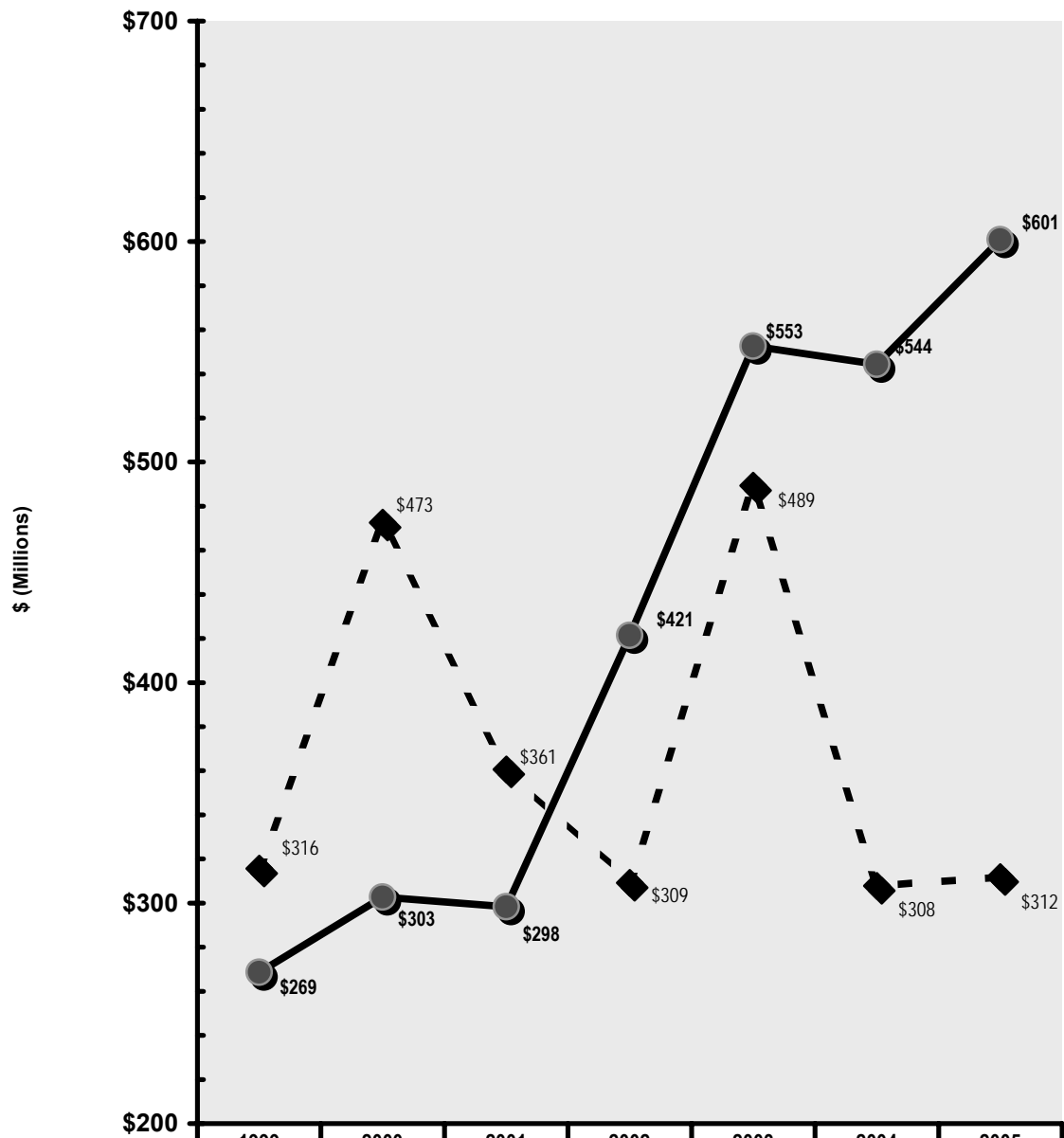
Lettuce, Total	222,142,207 lbs.
Broccoli	126,140,997 lbs.
Celery	66,430,182 lbs.
Strawberries	44,714,682 lbs.
Food Service	25,956,558 lbs.
Cauliflower	23,533,736 lbs.
Carrots	7,208,221 lbs.
Asparagus	6,188,364 lbs.
Anise/Fennel	5,731,895 lbs.
Tomatoes	4,320,584 lbs.
Other	<u>50,226,705 lbs.</u>

582,594,131 lbs.

Lettuce, Total	225,037,101 lbs.
Broccoli	124,207,067 lbs.
Celery	78,044,688 lbs.
Strawberries	37,279,240 lbs.
Food Service	35,265,490 lbs.
Cauliflower	24,631,435 lbs.
Carrots	8,423,055 lbs.
Asparagus	8,351,326 lbs.
Tomatoes	5,983,200 lbs.
Spinach	4,014,248 lbs.
Other	<u>80,221,846 lbs.</u>

631,458,696 lbs.

SEVEN YEAR COMPARISON OF HEAD AND LEAF LETTUCE TOTALS



◆	Head Lettuce Value	\$315,644,000	\$472,503,000	\$360,562,000	\$309,148,000	\$489,306,000	\$307,823,000	\$311,813,000
●	Leaf Lettuce Value	\$268,659,000	\$302,762,000	\$298,352,000	\$421,364,000	\$552,649,000	\$544,314,000	\$600,808,000

SUMMARY OF SUSTAINABLE AGRICULTURAL ACTIVITIES

PEST

AGENT / MECHANISM

SCOPE OF PROGRAM¹

COUNTY BIOLOGICAL CONTROL

Yellow Starthistle*, *Centaurea solstitialis*

Seedhead Weevils/Fly,
Bangasternus orientalis, Eustenopus villosus
Urophora sirunaseva, Larinus curtus,
Starthistle rust, Puccinia jacea var. solstitialis
Seedhead weevil, Rhinocyllus conicus
Leaf & stem mining moths, Coleophora spp
Stem & Seed weevils, and Microlarinus spp.
Seven-spotted lady beetle, Coccinella septempunctata
Parasitic wasp, Encarsia inaron

45 sites

Italian Thistle, Carduus spp.
Russian Thistle, Salsola australis
Puncture Vine, Tribulus terrestris
Aphid species
Ash Whitefly, Siphoninus phillyreae

General Distribution
7 sites
General and Local Distribution
1 site
General Distribution

* The hairy seedhead weevil, Eustenopus villosus, is available for release to individual properties with yellow starthistle infestations. Call for arrangements.

PEST ERADICATION

Scotch Thistle, Onopordum acanthium
Skeletonweed, Chondrilla juncea
Puna Grass, Achnatherum brachychaetum
Dalmatian Toadflax, Linaria genistifolia

Mechanical/Chemical
Mechanical/Chemical
Mechanical/Chemical
Mechanical/Chemical

One Infestation
Two Infestations
Seven Infestations
One infestation

Diffuse Knapweed (*Centaurea diffusa*), Hydrilla (*Hydrilla verticillata*), and biddy-biddy (*Acaena novae-zelandiae*) have been eradicated.

PEST MANAGEMENT

Roadside (virus host) Weeds
Roadside, Targeted Noxious Weeds
Lettuce Mosaic Virus
Lettuce Mosaic Virus
Celery Mosaic Virus
Lettuce Root Aphid

Chemical
Chemical
Virus-Free Seed
Host-Free Period
Host-Free Period
Quarantine, State Misc. Ruling 3597

County right-of-ways, spot treatment
County right-of-ways, boom and spot treatment
Indexing of all county-planted seed
No lettuce above ground 12/7-12/21
No celery above ground in January
Lombardy poplar prohibition

PEST EXCLUSION

Pest exclusion terminal inspections involved 1,765.5 hours, during which 6,131 incoming shipments were inspected. Sixteen shipments were rejected in violation of quarantine regulations.

PEST DETECTION

Pest detection is the systematic search for pests outside of a known infested area, or for pests not known to occur in California. The general goal is to detect the insects before they become established over an area so large that eradication is no longer biologically or economically feasible. Detection trapping is performed primarily by the County Agricultural Commissioner's offices.

TARGET PEST

INSECT HOSTS

NO. OF TRAPS SERVICED

Medfly
Melon Fruit Fly
Mexican Fruit Fly
Oriental Fruit Fly
Misc. Fruit Flies
Gypsy Moth
Japanese Beetle
Nantucket Pine Tip Moth
Trogoderma Beetle
Glassy Winged Sharpshooter

Fruit Trees
Vegetable Gardens
Fruit Trees
Fruit Trees
Fruits and Vegetables
Shade Trees
Turf, Roses
Monterey Pine
High Hazard Commodities
Nurseries/Vineyards/Urban Areas

1587
401
600
628
475
1135
603
34
15
534

Pest detection trapping activities accounted for 10,609.5 hours, with a total of 12,276 services performed on 5,487 traps placed. 52.5 hours were applied to inspecting 119 commercial crop sites of 17 net acres/1,695 gross acres. Five calls to residences were made for investigation of suspected exotic pest reports and 85 hours were utilized on inspection/identification of public-reported pests. Eighteen high hazard locations were inspected and 553 miles of entryways surveyed, accounting for 49.5 and 47 hours respectively. Special surveys were made for exotic aquatic weeds, Karnal bunt, sudden oak death disease, and glassy-winged sharpshooter.

ORGANIC FARMING

Ninety five farms, totaling approximately 16,410 acres, were registered in Monterey County in 2005. Utilizing organic principles defined in the California Organic Product Act of 2003, these farms produce a wide array of commodities, such as: strawberries, salad mix, spinach, lettuce, celery, raspberries, broccoli, grapes and other miscellaneous vegetables. The total estimated value of organic production in Monterey County during 2005 was \$155,536,239. In 2004 Monterey County had 14,073 acres under organic production with an estimated value of \$134,082,965.

¹ Represents total number of individual sites, plants, etc. incorporated in program effort (surveys, collection, releases, etc.)



Agricultural Commissioner's Office - Weights and Measures
1428 Abbott Street - Salinas, California 93901

