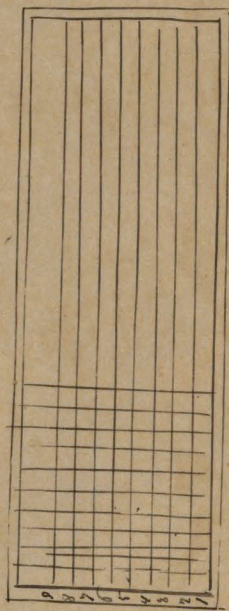
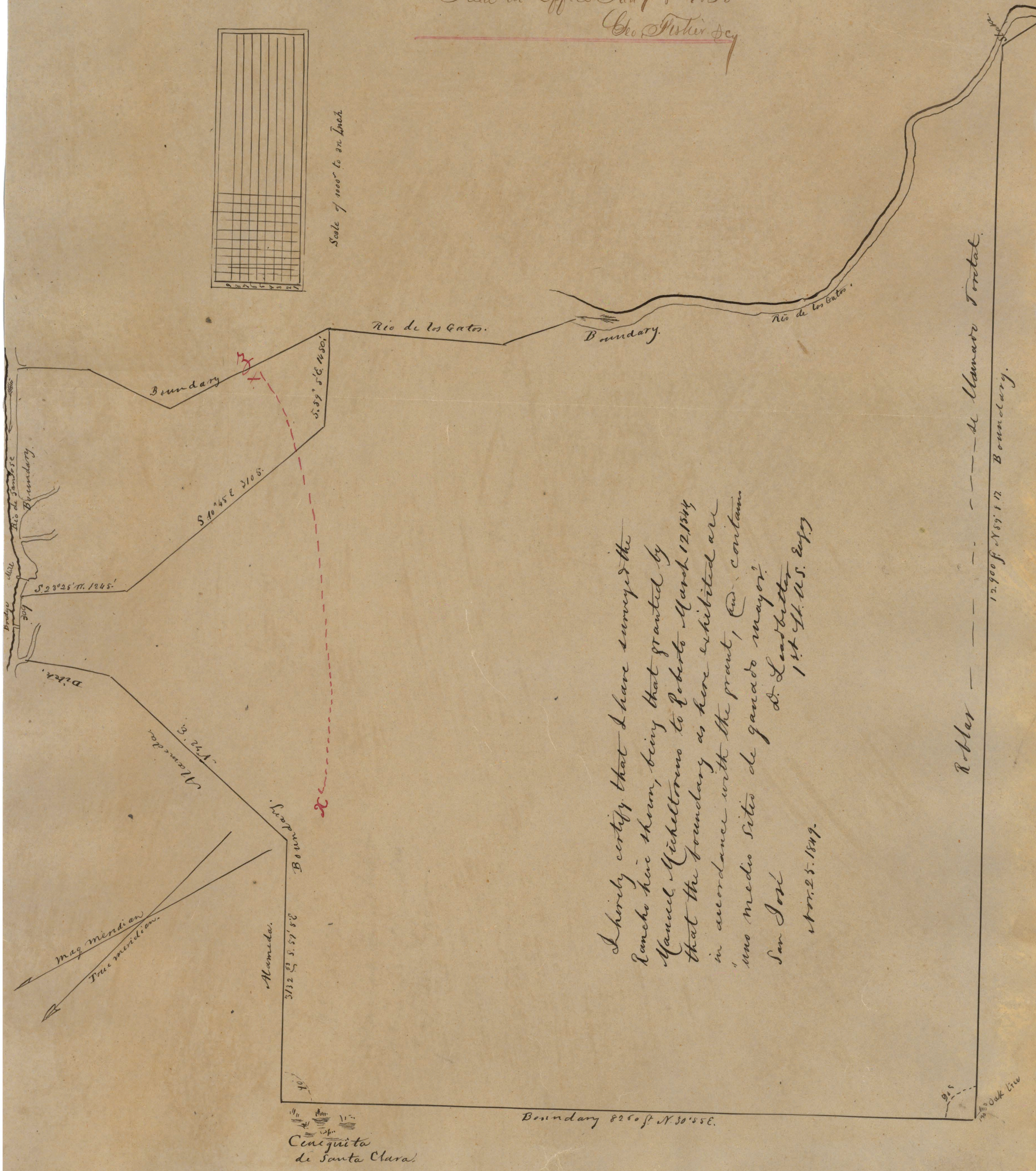


N<sup>o</sup> 167  
 B. M. Nagler et al  
 Las Cochas  
 Exhibit No 3 to Deposition of  
 A. M. Pico  
 Filed in Office Jun 7 8<sup>o</sup> 1853  
 Geo. Fisher, Secy



Scale of 1000 to an Inch



I hereby certify that I have surveyed the Rancho here shown, being that granted by Manuel Micheltonno to Roberto March 12, 1844 that the boundary as here exhibited are in accordance with the grant, and contain uno medio sitios de ganado mayor.  
 D. L. Leachetter  
 1<sup>st</sup> Lt. U.S. Engy  
 San José  
 Nov. 25. 1849.

Robles --- de Alameda Torral  
 12,900 ft N 89° 17' Boundary.

Cenigueta de Santa Clara

Boundary 8260 ft N 30° 55' E.